

Product datasheet for **TA334820**

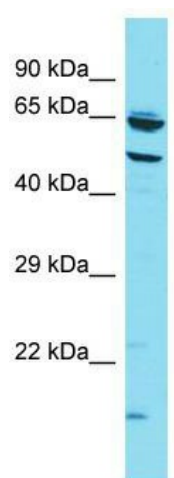
CCZ1B Rabbit Polyclonal Antibody

Product data:

Product Type:	Primary Antibodies
Applications:	WB
Recommended Dilution:	WB
Reactivity:	Human
Host:	Rabbit
Isotype:	IgG
Clonality:	Polyclonal
Immunogen:	The immunogen for anti-CCZ1B antibody is: synthetic peptide directed towards the N-terminal region of Human CCZ1B. Synthetic peptide located within the following region: PEENFWMMVVRNPIIEKQSKDGKPVIEYQEEELLDKVYSSVLRQCYSMY
Formulation:	Liquid. Purified antibody supplied in 1x PBS buffer with 0.09% (w/v) sodium azide and 2% sucrose.
Purification:	Affinity Purified
Conjugation:	Unconjugated
Storage:	Store at -20°C as received.
Stability:	Stable for 12 months from date of receipt.
Predicted Protein Size:	56 kDa
Gene Name:	CCZ1 homolog B, vacuolar protein trafficking and biogenesis associated
Database Link:	NP_932765 Entrez Gene 221960 Human P86790
Background:	The function of this protein remains unknown.
Synonyms:	C7orf28B; H_NH0577018.2
Note:	Immunogen Sequence Homology: Human: 100%; Bovine: 93%; Dog: 86%; Pig: 86%; Rat: 86%; Horse: 86%; Mouse: 86%; Rabbit: 86%; Guinea pig: 86%



[View online »](#)

Product images:

Host: Rabbit; Target Name: CCZ1B; Sample Tissue: HT1080 Whole Cell lysates; Antibody Dilution: 1.0 ug/ml; CCZ1B is strongly supported by BioGPS gene expression data to be expressed in Human HT1080 cells