

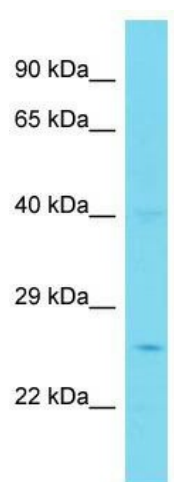
Product datasheet for TA334819

PPP1R35 Rabbit Polyclonal Antibody

Product data:

Product Type:	Primary Antibodies
Applications:	WB
Recommended Dilution:	WB
Reactivity:	Human
Host:	Rabbit
Isotype:	IgG
Clonality:	Polyclonal
Immunogen:	The immunogen for anti-PPP1R35 antibody is: synthetic peptide directed towards the N-terminal region of Human PPP1R35. Synthetic peptide located within the following region: AAAVPGPPPEPQVPQLRAPVPEPGLDLSLSPRDPSPQPRHGSPGRRKGRA
Formulation:	Liquid. Purified antibody supplied in 1x PBS buffer with 0.09% (w/v) sodium azide and 2% sucrose.
Purification:	Affinity Purified
Conjugation:	Unconjugated
Storage:	Store at -20°C as received.
Stability:	Stable for 12 months from date of receipt.
Predicted Protein Size:	27 kDa
Gene Name:	protein phosphatase 1 regulatory subunit 35
Database Link:	NP_659467 Entrez Gene 221908 Human Q8TAP8
Background:	PPP1R35 inhibits PPP1CA phosphatase activity.
Synonyms:	C7orf47
Note:	Immunogen Sequence Homology: Human: 100%; Rabbit: 79%


[View online »](#)

Product images:

Host: Rabbit; Target Name: PPP1R35; Sample
Tissue: Jurkat Whole Cell lysates; Antibody
Dilution: 1.0 ug/ml