

Product datasheet for **TA334818**

C6orf136 Rabbit Polyclonal Antibody

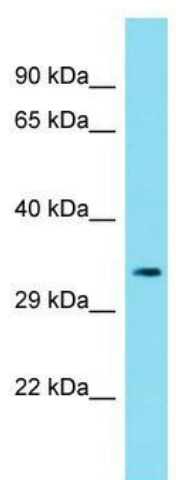
Product data:

Product Type:	Primary Antibodies
Applications:	WB
Recommended Dilution:	WB
Reactivity:	Human
Host:	Rabbit
Isotype:	IgG
Clonality:	Polyclonal
Immunogen:	The immunogen for anti-C6orf136 antibody is: synthetic peptide directed towards the middle region of Human C6orf136. Synthetic peptide located within the following region: CPYPGAWIPFQVPGTAHPSPATPSGDPSMEEHLSVMYERLRQELPKLFLQ
Formulation:	Liquid. Purified antibody supplied in 1x PBS buffer with 0.09% (w/v) sodium azide and 2% sucrose. <i>Note that this product is shipped as lyophilized powder to China customers.</i>
Purification:	Affinity Purified
Conjugation:	Unconjugated
Storage:	Store at -20°C as received.
Stability:	Stable for 12 months from date of receipt.
Predicted Protein Size:	35 kDa
Gene Name:	chromosome 6 open reading frame 136
Database Link:	NP_001103408 Entrez Gene 221545 Human Q5SQH8
Background:	The function of this protein remains unknown.
Synonyms:	MGC15854
Note:	Immunogen Sequence Homology: Dog: 100%; Pig: 100%; Horse: 100%; Human: 100%; Bovine: 100%; Rat: 92%; Mouse: 86%; Rabbit: 86%; Guinea pig: 85%



[View online »](#)

Product images:



Host: Rabbit; Target Name: C6orf136; Sample
Tissue: 293T Whole Cell lysates; Antibody
Dilution: 1.0 ug/ml