

Product datasheet for **TA334816**

SMIM29 Rabbit Polyclonal Antibody

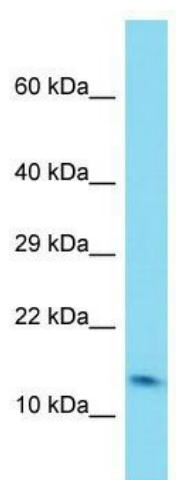
Product data:

Product Type:	Primary Antibodies
Applications:	WB
Recommended Dilution:	WB
Reactivity:	Human
Host:	Rabbit
Isotype:	IgG
Clonality:	Polyclonal
Immunogen:	The immunogen for anti-C6orf1 antibody is: synthetic peptide directed towards the N-terminal region of Human C6orf1. Synthetic peptide located within the following region: SCSLTWETPRWYMAGR VATSTSGCHCWMSRRDLTPLHPSEPGVLDCLGP
Formulation:	Liquid. Purified antibody supplied in 1x PBS buffer with 0.09% (w/v) sodium azide and 2% sucrose. <i>Note that this product is shipped as lyophilized powder to China customers.</i>
Purification:	Affinity Purified
Conjugation:	Unconjugated
Storage:	Store at -20°C as received.
Stability:	Stable for 12 months from date of receipt.
Predicted Protein Size:	17 kDa
Gene Name:	chromosome 6 open reading frame 1
Database Link:	NP_001008704 Entrez Gene 221491 Human Q86T20
Background:	The function of this protein remains unknown.
Synonyms:	LBH
Note:	Immunogen Sequence Homology: Human: 100%; Mouse: 85%



[View online »](#)

Product images:



Host: Rabbit; Target Name: C6orf1; Sample
Tissue: Fetal Lung lysates; Antibody Dilution: 1.0
ug/ml