

Product datasheet for **TA334815**

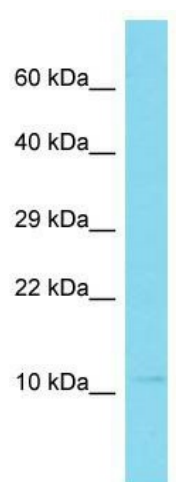
ZNF22-AS1 Rabbit Polyclonal Antibody

Product data:

Product Type:	Primary Antibodies
Applications:	WB
Recommended Dilution:	WB
Reactivity:	Human
Host:	Rabbit
Isotype:	IgG
Clonality:	Polyclonal
Immunogen:	The immunogen for anti-C10orf25 antibody is: synthetic peptide directed towards the N-terminal region of Human C10orf25. Synthetic peptide located within the following region: MVPGPPESVVRFFLWFCFLPPTRKASCDPRDLKSCNRPVWSRLLKPNS
Formulation:	Liquid. Purified antibody supplied in 1x PBS buffer with 0.09% (w/v) sodium azide and 2% sucrose.
Purification:	Affinity Purified
Conjugation:	Unconjugated
Storage:	Store at -20°C as received.
Stability:	Stable for 12 months from date of receipt.
Predicted Protein Size:	13 kDa
Gene Name:	chromosome 10 open reading frame 25
Database Link:	NP_001034469 Entrez Gene 220979 Human
Background:	The function of this protein remains unknown.
Synonyms:	FLJ18393; FLJ30567
Note:	Immunogen Sequence Homology: Human: 100%
Protein Families:	Secreted Protein



[View online »](#)

Product images:


Host: Rabbit; Target Name: C10orf25; Sample
Tissue: U937 Whole Cell lysates; Antibody
Dilution: 1.0 ug/ml