

## Product datasheet for TA334814

### CBWD3 Rabbit Polyclonal Antibody

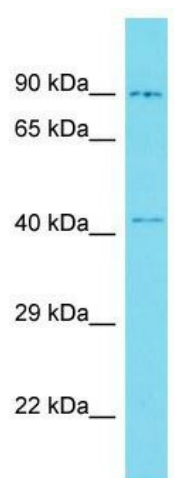
#### Product data:

Product Type:	Primary Antibodies
Applications:	WB
Recommended Dilution:	WB
Reactivity:	Human
Host:	Rabbit
Isotype:	IgG
Clonality:	Polyclonal
Immunogen:	The immunogen for anti-CBWD3 antibody is: synthetic peptide directed towards the C-terminal region of Human CBWD3. Synthetic peptide located within the following region: VQGVHELYDLEETPVSWKDDTERTNRLVLIGRNLDKDKILKQLFIATVTET
Formulation:	Liquid. Purified antibody supplied in 1x PBS buffer with 0.09% (w/v) sodium azide and 2% sucrose. <i>Note that this product is shipped as lyophilized powder to China customers.</i>
Purification:	Affinity Purified
Storage:	Store at -20°C as received.
Stability:	Stable for 12 months from date of receipt.
Predicted Protein Size:	43 kDa
Gene Name:	COBW domain containing 3
Database Link:	<a href="#">NP_958861</a> <a href="#">Entrez Gene 445571</a> Human
Background:	The function of this protein remains unknown.
Synonyms:	bA561O23.1
Note:	Immunogen Sequence Homology: Pig: 100%; Rat: 100%; Human: 100%; Dog: 93%; Horse: 93%; Rabbit: 93%; Guinea pig: 93%; Bovine: 79%



[View online »](#)

## Product images:



Host: Rabbit; Target Name: CBWD3; Sample  
Tissue: Fetal Kidney lysates; Antibody Dilution: 1.0  
ug/ml