

## Product datasheet for **TA334812**

### Rhotekin 2 (RTKN2) Rabbit Polyclonal Antibody

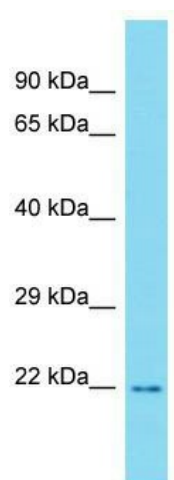
#### Product data:

Product Type:	Primary Antibodies
Applications:	WB
Recommended Dilution:	WB
Reactivity:	Human
Host:	Rabbit
Isotype:	IgG
Clonality:	Polyclonal
Immunogen:	The immunogen for anti-RTKN2 antibody is: synthetic peptide directed towards the N-terminal region of Human RTKN2. Synthetic peptide located within the following region: DIRIPLMWKDSDFSNKERSRRYAIFCLFKMGANVFDTDVVNVDKTITDI
Formulation:	Liquid. Purified antibody supplied in 1x PBS buffer with 0.09% (w/v) sodium azide and 2% sucrose. <i>Note that this product is shipped as lyophilized powder to China customers.</i>
Purification:	Affinity Purified
Conjugation:	Unconjugated
Storage:	Store at -20°C as received.
Stability:	Stable for 12 months from date of receipt.
Predicted Protein Size:	17 kDa
Gene Name:	rhotekin 2
Database Link:	<a href="#">NP_660350</a> <a href="#">Entrez Gene 219790 Human</a> <a href="#">Q8IZC4</a>
Background:	RTKN2 may play an important role in lymphopoiesis.
Synonyms:	bA531F24.1; PLEKHK1
Note:	Immunogen Sequence Homology: Dog: 100%; Rat: 100%; Human: 100%; Mouse: 100%; Bovine: 100%; Pig: 93%; Horse: 93%; Rabbit: 93%; Guinea pig: 92%



[View online »](#)

## Product images:



Host: Rabbit; Target Name: RTKN2; Sample  
Tissue: HT1080 Whole Cell lysates; Antibody  
Dilution: 1.0 ug/ml