

Product datasheet for **TA334807**

CCDC107 Rabbit Polyclonal Antibody

Product data:

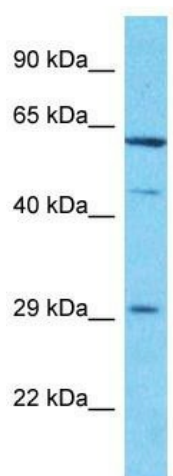
Product Type:	Primary Antibodies
Applications:	WB
Recommended Dilution:	WB
Reactivity:	Human
Host:	Rabbit
Isotype:	IgG
Clonality:	Polyclonal
Immunogen:	The immunogen for anti-CCDC107 antibody is: synthetic peptide directed towards the N-terminal region of Human CCDC107. Synthetic peptide located within the following region: PPLKDQRRERTRAGSLPLGALYTAAVAAVFLYKCLKQKDEAVLHEEASKQ
Formulation:	Liquid. Purified antibody supplied in 1x PBS buffer with 0.09% (w/v) sodium azide and 2% sucrose. <i>Note that this product is shipped as lyophilized powder to China customers.</i>
Purification:	Affinity Purified
Conjugation:	Unconjugated
Storage:	Store at -20°C as received.
Stability:	Stable for 12 months from date of receipt.
Predicted Protein Size:	31 kDa
Gene Name:	coiled-coil domain containing 107
Database Link:	NP_777583 Entrez Gene 203260 Human Q8WV48
Background:	This gene encodes a membrane protein which contains a coiled-coil domain in the central region. Multiple alternatively spliced transcript variants encoding different isoforms have been found for this gene.
Synonyms:	PSEC0222
Note:	Immunogen Sequence Homology: Human: 100%; Rat: 86%; Mouse: 86%; Dog: 85%; Horse: 85%



[View online »](#)

Protein Families: Transmembrane

Product images:



Host: Rabbit

Target Name: CCDC107

Sample Tissue: Jurkat Cell Lysate

Antibody Dilution: 1.0 μ g/ml

Host: Rabbit; Target Name: CCDC107; Sample Tissue: Jurkat Whole Cell lysates; Antibody Dilution: 1.0 ug/ml