

Product datasheet for **TA334804**

C4orf34 (SMIM14) Rabbit Polyclonal Antibody

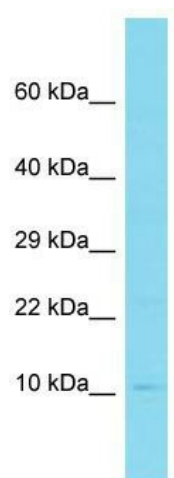
Product data:

Product Type:	Primary Antibodies
Applications:	WB
Recommended Dilution:	WB
Reactivity:	Human
Host:	Rabbit
Isotype:	IgG
Clonality:	Polyclonal
Immunogen:	The immunogen for anti-C4orf34 antibody is: synthetic peptide directed towards the N-terminal region of Human C4orf34. Synthetic peptide located within the following region: VCSHEHAMRRLINLLRQSQSYCTDTECLQELPGPSGDNGISVTMILVAWM
Formulation:	Liquid. Purified antibody supplied in 1x PBS buffer with 0.09% (w/v) sodium azide and 2% sucrose. <i>Note that this product is shipped as lyophilized powder to China customers.</i>
Purification:	Affinity Purified
Conjugation:	Unconjugated
Storage:	Store at -20°C as received.
Stability:	Stable for 12 months from date of receipt.
Predicted Protein Size:	10 kDa
Gene Name:	small integral membrane protein 14
Database Link:	NP_777581 Entrez Gene 201895 Human Q96QK8
Background:	The function of this protein remains unknown.
Synonyms:	C4orf34
Note:	Immunogen Sequence Homology: Dog: 100%; Pig: 100%; Rat: 100%; Horse: 100%; Human: 100%; Mouse: 100%; Bovine: 100%; Zebrafish: 100%; Guinea pig: 100%
Protein Families:	Transmembrane



[View online »](#)

Product images:



Host: Rabbit; Target Name: C4orf34; Sample
Tissue: COLO205 Whole Cell lysates; Antibody
Dilution: 1.0 ug/ml