

## Product datasheet for **TA334803**

### PLD6 Rabbit Polyclonal Antibody

#### Product data:

Product Type:	Primary Antibodies
Applications:	WB
Recommended Dilution:	WB
Reactivity:	Human
Host:	Rabbit
Isotype:	IgG
Clonality:	Polyclonal
Immunogen:	The immunogen for anti-PLD6 antibody is: synthetic peptide directed towards the C-terminal region of Human PLD6. Synthetic peptide located within the following region: ITEDDEYVRLFLEEFERIWEQFNPTKYTFPPKSHGSCAPPVSRAGRL
Formulation:	Liquid. Purified antibody supplied in 1x PBS buffer with 0.09% (w/v) sodium azide and 2% sucrose. <i>Note that this product is shipped as lyophilized powder to China customers.</i>
Purification:	Affinity Purified
Conjugation:	Unconjugated
Storage:	Store at -20°C as received.
Stability:	Stable for 12 months from date of receipt.
Predicted Protein Size:	28 kDa
Gene Name:	phospholipase D family member 6
Database Link:	<a href="#">NP_849158</a> <a href="#">Entrez Gene 201164 Human</a> <a href="#">Q8N2A8</a>



[View online »](#)

**Background:**

PLD6 is a cardiolipin hydrolase present at the mitochondrial outer membrane required both for mitochondrial fusion and piRNA metabolic process. PLD6 acts by catalyzing the hydrolysis of cardiolipin (diphosphatidylglycerol) to form phosphatidate (phosphatidic acid or PA) at the mitochondrial outer membrane surface, promoting mitochondrial fusion. The production of phosphatidate also regulates the piRNA metabolic process by promoting recruitment and/or activation of components of the meiotic nuage, also named P granule, a critical step for primary biogenesis of piRNAs. It is required during spermatogenesis to repress transposable elements and prevent their mobilization via its role in the piRNA metabolic process, which mediates the repression of transposable elements during meiosis by forming complexes composed of piRNAs and Piwi proteins and govern the methylation and subsequent repression of transposons.

**Synonyms:**

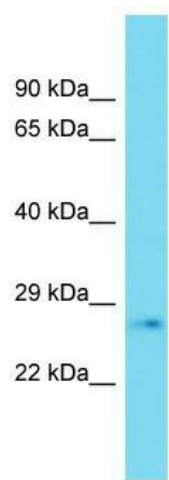
ZUC

**Note:**

Immunogen Sequence Homology: Human: 100%

**Protein Families:**

Transmembrane

**Product images:**

Host: Rabbit; Target Name: PLD6; Sample Tissue: Fetal Heart lysates; Antibody Dilution: 1.0 ug/ml