

Product datasheet for **TA334802**

C1orf86 (FAAP20) Rabbit Polyclonal Antibody

Product data:

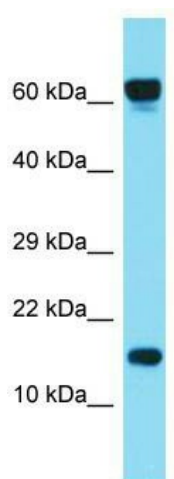
Product Type:	Primary Antibodies
Applications:	WB
Recommended Dilution:	WB
Reactivity:	Human
Host:	Rabbit
Isotype:	IgG
Clonality:	Polyclonal
Immunogen:	The immunogen for anti-C1orf86 antibody is: synthetic peptide directed towards the C-terminal region of Human C1orf86. Synthetic peptide located within the following region: ARSLPQRPA PDPCRAPRVEQQPSVEGAAALRSCPMCQKEFAPRLTQLDVD
Formulation:	Liquid. Purified antibody supplied in 1x PBS buffer with 0.09% (w/v) sodium azide and 2% sucrose. <i>Note that this product is shipped as lyophilized powder to China customers.</i>
Purification:	Affinity Purified
Conjugation:	Unconjugated
Storage:	Store at -20°C as received.
Stability:	Stable for 12 months from date of receipt.
Predicted Protein Size:	19 kDa
Gene Name:	Fanconi anemia core complex associated protein 20
Database Link:	NP_872339 Entrez Gene 199990 Human Q6NZ36
Background:	C1orf86 is a component of the Fanconi anemia (FA) complex required to recruit the FA complex to DNA interstrand cross-links (ICLs) and promote ICLs repair. Following DNA damage recognizes and binds 'Lys-63'-linked ubiquitin generated by RNF8 at ICLs and recruits other components of the FA complex. It promotes translesion synthesis via interaction with REV1.
Synonyms:	C1orf86; FP7162



[View online »](#)

Note: Immunogen Sequence Homology: Human: 100%

Product images:



Host: Rabbit; Target Name: C1orf86; Sample
Tissue: ACHN Whole cell lysates; Antibody
Dilution: 1.0 ug/ml