

Product datasheet for **TA334800**

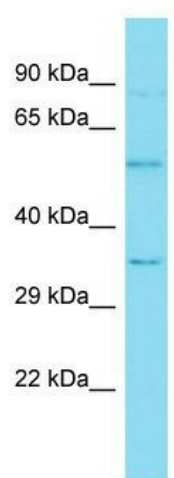
OIT3 Rabbit Polyclonal Antibody

Product data:

Product Type:	Primary Antibodies
Applications:	WB
Recommended Dilution:	WB
Reactivity:	Human
Host:	Rabbit
Isotype:	IgG
Clonality:	Polyclonal
Immunogen:	The immunogen for anti-OIT3 antibody is: synthetic peptide directed towards the C-terminal region of Human OIT3. Synthetic peptide located within the following region: CRVLVCGVLDERSRCAQGCHRRMRRGAGGEDSAGLQGQTLTGPIRIDWE
Formulation:	Liquid. Purified antibody supplied in 1x PBS buffer with 0.09% (w/v) sodium azide and 2% sucrose. <i>Note that this product is shipped as lyophilized powder to China customers.</i>
Purification:	Affinity Purified
Conjugation:	Unconjugated
Storage:	Store at -20°C as received.
Stability:	Stable for 12 months from date of receipt.
Predicted Protein Size:	57 kDa
Gene Name:	oncoprotein induced transcript 3
Database Link:	NP_689848 Entrez Gene 170392 Human Q8WWZ8
Background:	OIT3 may be involved in hepatocellular function and development.
Synonyms:	LZP
Note:	Immunogen Sequence Homology: Human: 100%
Protein Families:	Druggable Genome



[View online »](#)

Product images:

Host: Rabbit; Target Name: OIT3; Sample Tissue: ACHN Whole Cell lysates; Antibody Dilution: 1.0 ug/ml