

Product datasheet for **TA334797**

C8orf42 (TDRP) Rabbit Polyclonal Antibody

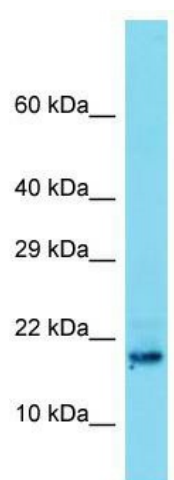
Product data:

Product Type:	Primary Antibodies
Applications:	WB
Recommended Dilution:	WB
Reactivity:	Human
Host:	Rabbit
Isotype:	IgG
Clonality:	Polyclonal
Immunogen:	The immunogen for anti-C8orf42 antibody is: synthetic peptide directed towards the N-terminal region of Human C8orf42. Synthetic peptide located within the following region: EQHLLERCKSPKSKGTNLRRLKEELKAEKKSFGWDLVVKQNIQSKKPDEI
Formulation:	Liquid. Purified antibody supplied in 1x PBS buffer with 0.09% (w/v) sodium azide and 2% sucrose. <i>Note that this product is shipped as lyophilized powder to China customers.</i>
Purification:	Affinity Purified
Conjugation:	Unconjugated
Storage:	Store at -20°C as received.
Stability:	Stable for 12 months from date of receipt.
Predicted Protein Size:	20 kDa
Gene Name:	testis development related protein
Database Link:	NP_778250 Entrez Gene 157695 Human Q86YL5
Background:	The function of this protein remains unknown.
Synonyms:	C8orf42; Inm01; TDRP1; TDRP2
Note:	Immunogen Sequence Homology: Dog: 100%; Pig: 100%; Rat: 100%; Human: 100%; Guinea pig: 100%; Horse: 79%; Mouse: 79%



[View online »](#)

Product images:



Host: Rabbit; Target Name: C8orf42; Sample
Tissue: Placenta lysates; Antibody Dilution: 1.0
ug/ml