

Product datasheet for **TA334796**

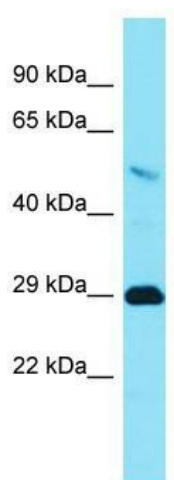
TMEM65 Rabbit Polyclonal Antibody

Product data:

Product Type:	Primary Antibodies
Applications:	WB
Recommended Dilution:	WB
Reactivity:	Human
Host:	Rabbit
Isotype:	IgG
Clonality:	Polyclonal
Immunogen:	The immunogen for anti-TMEM65 antibody is: synthetic peptide directed towards the C-terminal region of Human TMEM65. Synthetic peptide located within the following region: LTPKQVDMWQTRLSTHLGKAVGVGTIGCILGMFPLIFFGGGEEDEKLETKS
Formulation:	Liquid. Purified antibody supplied in 1x PBS buffer with 0.09% (w/v) sodium azide and 2% sucrose.
Purification:	Affinity Purified
Conjugation:	Unconjugated
Storage:	Store at -20°C as received.
Stability:	Stable for 12 months from date of receipt.
Predicted Protein Size:	25 kDa
Gene Name:	transmembrane protein 65
Database Link:	NP_919267 Entrez Gene 157378 Human Q6PI78
Background:	The function of this protein remains unknown.
Synonyms:	2610029O13Rik; 4930438D12Rik; OTTMUSP00000023023; transmembrane protein 65
Note:	Immunogen Sequence Homology: Dog: 100%; Pig: 100%; Rat: 100%; Horse: 100%; Human: 100%; Mouse: 92%; Bovine: 85%
Protein Families:	Transmembrane



[View online »](#)

Product images:

Host: Rabbit; Target Name: TMEM65; Sample
Tissue: Placenta lysates; Antibody Dilution: 1.0
ug/ml