

Product datasheet for **TA334795**

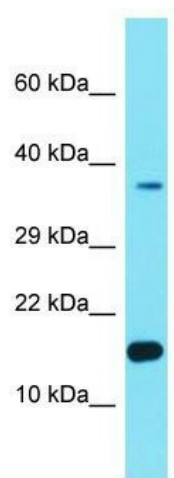
FER1L6-AS2 Rabbit Polyclonal Antibody

Product data:

Product Type:	Primary Antibodies
Applications:	WB
Recommended Dilution:	WB
Reactivity:	Human
Host:	Rabbit
Isotype:	IgG
Clonality:	Polyclonal
Immunogen:	The immunogen for anti-FER1L6-AS2 antibody is: synthetic peptide directed towards the middle region of Human FER1L6-AS2. Synthetic peptide located within the following region: ELHLLHFPNSPEENLRKRPAPSPQIHGGAPHLPWLCVEKSDLLPENHAV
Formulation:	Liquid. Purified antibody supplied in 1x PBS buffer with 0.09% (w/v) sodium azide and 2% sucrose.
Purification:	Affinity Purified
Conjugation:	Unconjugated
Storage:	Store at -20°C as received.
Stability:	Stable for 12 months from date of receipt.
Predicted Protein Size:	15 kDa
Gene Name:	FER1L6 antisense RNA 2
Database Link:	NP_872331 Entrez Gene 157376 Human
Background:	The function of this protein remains unknown.
Synonyms:	FLJ32770; MGC126551; MGC126555
Note:	Immunogen Sequence Homology: Human: 100%



[View online »](#)

Product images:

Host: Rabbit; Target Name: FER1L6-AS2; Sample
Tissue: HeLa Whole cell lysates; Antibody Dilution:
1.0 ug/ml