

## Product datasheet for **TA334794**

### C4orf45 Rabbit Polyclonal Antibody

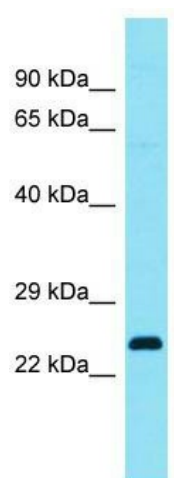
#### Product data:

Product Type:	Primary Antibodies
Applications:	WB
Recommended Dilution:	WB
Reactivity:	Human
Host:	Rabbit
Isotype:	IgG
Clonality:	Polyclonal
Immunogen:	The immunogen for anti-C4orf45 antibody is: synthetic peptide directed towards the C-terminal region of Human C4orf45. Synthetic peptide located within the following region: PWQPKPHVLDMQGKQSRASFAWHMSAFEDTDQRNSKWAILVRQCKSSLPR
Formulation:	Liquid. Purified antibody supplied in 1x PBS buffer with 0.09% (w/v) sodium azide and 2% sucrose. <i>Note that this product is shipped as lyophilized powder to China customers.</i>
Purification:	Affinity Purified
Conjugation:	Unconjugated
Storage:	Store at -20°C as received.
Stability:	Stable for 12 months from date of receipt.
Predicted Protein Size:	21 kDa
Gene Name:	chromosome 4 open reading frame 45
Database Link:	<a href="#">NP_689756</a> <a href="#">Entrez Gene 152940 Human</a> <a href="#">Q96LM5</a>
Background:	The function of this protein remains unknown.
Synonyms:	FLJ25371
Note:	Immunogen Sequence Homology: Human: 100%; Horse: 83%



[View online »](#)

## Product images:



Host: Rabbit; Target Name: C4orf45; Sample  
Tissue: Fetal Lung lysates; Antibody Dilution: 1.0  
ug/ml