

Product datasheet for **TA334793**

ODAPH Rabbit Polyclonal Antibody

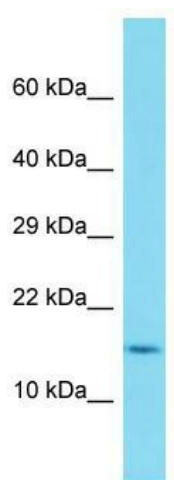
Product data:

Product Type:	Primary Antibodies
Applications:	WB
Recommended Dilution:	WB
Reactivity:	Human
Host:	Rabbit
Isotype:	IgG
Clonality:	Polyclonal
Immunogen:	The immunogen for anti-C4orf26 antibody is: synthetic peptide directed towards the N-terminal region of Human C4orf26. Synthetic peptide located within the following region: MARRHCFSYWLLVCWLVTVAEGQEEVFTPPGDSQNNADATDCQIFLTP
Formulation:	Liquid. Purified antibody supplied in 1x PBS buffer with 0.09% (w/v) sodium azide and 2% sucrose.
Purification:	Affinity Purified
Conjugation:	Unconjugated
Storage:	Store at -20°C as received.
Stability:	Stable for 12 months from date of receipt.
Predicted Protein Size:	14 kDa
Gene Name:	chromosome 4 open reading frame 26
Database Link:	NP_848592 Entrez Gene 152816 Human Q17RF5
Background:	Dental enamel forms the outer cap of teeth and is the hardest substance found in vertebrates. This gene is thought to encode an extracellular matrix acidic phosphoprotein that has a function in enamel mineralization during amelogenesis. Mutations in this gene are associated with recessive hypomineralized amelogenesis imperfecta.
Synonyms:	A12A4
Note:	Immunogen Sequence Homology: Human: 93%



[View online »](#)

Product images:



Host: Rabbit; Target Name: C4orf26; Sample
Tissue: HT1080 Whole Cell lysates; Antibody
Dilution: 1.0 ug/ml