

Product datasheet for **TA334790**

C3orf55 (PQLC2L) Rabbit Polyclonal Antibody

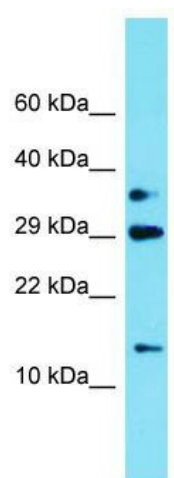
Product data:

Product Type:	Primary Antibodies
Applications:	WB
Recommended Dilution:	WB
Reactivity:	Human
Host:	Rabbit
Isotype:	IgG
Clonality:	Polyclonal
Immunogen:	The immunogen for anti-C3orf55 antibody is: synthetic peptide directed towards the N-terminal region of Human C3orf55. Synthetic peptide located within the following region: KVVGNRYRVNTANSSTDTSGEHLTCLRSQLFVAYRNGRVDEAVSLGFLDCW
Formulation:	Liquid. Purified antibody supplied in 1x PBS buffer with 0.09% (w/v) sodium azide and 2% sucrose.
Purification:	Affinity Purified
Conjugation:	Unconjugated
Storage:	Store at -20°C as received.
Stability:	Stable for 12 months from date of receipt.
Predicted Protein Size:	12 kDa
Gene Name:	PQ loop repeat containing 2-like
Database Link:	NP_001093247 Entrez Gene 152078 Human A1A4F0
Background:	The function of this protein remains unknown.
Synonyms:	C3orf55
Note:	Immunogen Sequence Homology: Human: 100%



[View online »](#)

Product images:



Host: Rabbit; Target Name: C3orf55; Sample
Tissue: 293T Whole Cell lysates; Antibody
Dilution: 1.0 ug/ml