

Product datasheet for **TA334789**

YDJC Rabbit Polyclonal Antibody

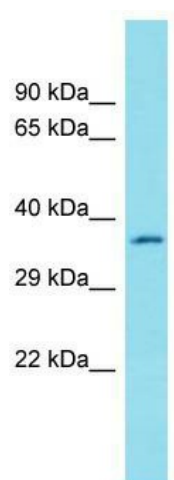
Product data:

Product Type:	Primary Antibodies
Applications:	WB
Recommended Dilution:	WB
Reactivity:	Human
Host:	Rabbit
Isotype:	IgG
Clonality:	Polyclonal
Immunogen:	The immunogen for anti-YDJC antibody is: synthetic peptide directed towards the C-terminal region of Human YDJC. Synthetic peptide located within the following region: SAHRVSGALARVLEGLTAGHTLTAELEMAHPGYPSPPTGGCGEGPDAFSC
Formulation:	Liquid. Purified antibody supplied in 1x PBS buffer with 0.09% (w/v) sodium azide and 2% sucrose.
Purification:	Affinity Purified
Conjugation:	Unconjugated
Storage:	Store at -20°C as received.
Stability:	Stable for 12 months from date of receipt.
Predicted Protein Size:	34 kDa
Gene Name:	YdjC homolog (bacterial)
Database Link:	NP_001017964 Entrez Gene 150223 Human A8MPS7
Background:	The function of this protein remains unknown.
Synonyms:	MGC133160
Note:	Immunogen Sequence Homology: Horse: 100%; Human: 100%; Dog: 93%; Pig: 93%; Rat: 93%; Mouse: 93%; Bovine: 93%; Rabbit: 93%; Zebrafish: 91%



[View online »](#)

Product images:



Host: Rabbit; Target Name: YDJC; Sample Tissue: COLO205 Whole Cell lysates; Antibody Dilution: 1.0 ug/ml