

## Product datasheet for **TA334788**

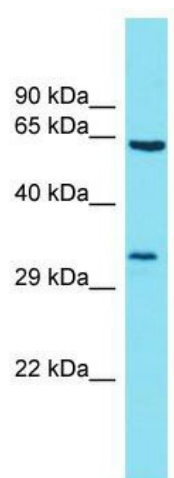
### BTBD19 Rabbit Polyclonal Antibody

#### Product data:

Product Type:	Primary Antibodies
Applications:	WB
Recommended Dilution:	WB
Reactivity:	Human
Host:	Rabbit
Isotype:	IgG
Clonality:	Polyclonal
Immunogen:	The immunogen for anti-BTBD19 antibody is: synthetic peptide directed towards the C-terminal region of Human BTBD19. Synthetic peptide located within the following region: LERPVAEVAAPVVKELRLALLAPAELSALEEQNRQEPLIPVEQIVEAWKC
Formulation:	Liquid. Purified antibody supplied in 1x PBS buffer with 0.09% (w/v) sodium azide and 2% sucrose.
Purification:	Affinity Purified
Conjugation:	Unconjugated
Storage:	Store at -20°C as received.
Stability:	Stable for 12 months from date of receipt.
Predicted Protein Size:	32 kDa
Gene Name:	BTB domain containing 19
Database Link:	<a href="#">NP_001130009</a> <a href="#">Entrez Gene 149478 Human</a> <a href="#">C9JJ37</a>
Background:	The function of this protein remains unknown.
Synonyms:	RP11-269F19.7
Note:	Immunogen Sequence Homology: Horse: 100%; Human: 100%; Pig: 93%; Rat: 93%; Mouse: 93%; Bovine: 93%; Rabbit: 93%; Guinea pig: 93%; Dog: 86%



[View online »](#)

**Product images:**


Host: Rabbit; Target Name: BTBD19; Sample  
Tissue: 721\_B Whole Cell lysates; Antibody  
Dilution: 1.0 ug/ml