

## Product datasheet for **TA334786**

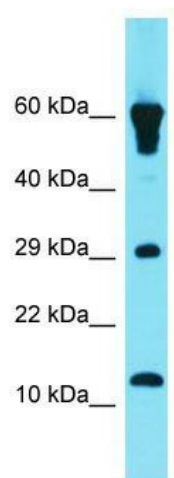
### **C1orf150 (GCSAML) Rabbit Polyclonal Antibody**

#### **Product data:**

<b>Product Type:</b>	Primary Antibodies
<b>Applications:</b>	WB
<b>Recommended Dilution:</b>	WB
<b>Reactivity:</b>	Human
<b>Host:</b>	Rabbit
<b>Isotype:</b>	IgG
<b>Clonality:</b>	Polyclonal
<b>Immunogen:</b>	The immunogen for anti-GCSAML antibody is: synthetic peptide directed towards the N-terminal region of Human GCSAML. Synthetic peptide located within the following region: DEERKRQEMTTFERKLQDQDKKSQEVSTSNQENENGSSEVVCYTVINH
<b>Formulation:</b>	Liquid. Purified antibody supplied in 1x PBS buffer with 0.09% (w/v) sodium azide and 2% sucrose.
<b>Purification:</b>	Affinity Purified
<b>Conjugation:</b>	Unconjugated
<b>Storage:</b>	Store at -20°C as received.
<b>Stability:</b>	Stable for 12 months from date of receipt.
<b>Predicted Protein Size:</b>	14 kDa
<b>Gene Name:</b>	germinal center-associated, signaling and motility-like
<b>Database Link:</b>	<a href="#">NP_660321</a> <a href="#">Entrez Gene 148823 Human</a> <a href="#">Q5IQS6</a>
<b>Background:</b>	The function of this protein remains unknown.
<b>Synonyms:</b>	C1orf150
<b>Note:</b>	Immunogen Sequence Homology: Dog: 100%; Human: 100%



[View online »](#)

**Product images:**

Host: Rabbit; Target Name: GCSAML; Sample  
Tissue: Fetal Heart lysates; Antibody Dilution: 1.0  
ug/ml