

## Product datasheet for **TA334782**

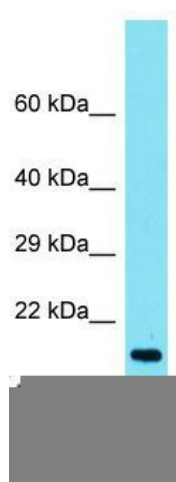
### TMEM190 Rabbit Polyclonal Antibody

#### Product data:

Product Type:	Primary Antibodies
Applications:	WB
Recommended Dilution:	WB
Reactivity:	Human
Host:	Rabbit
Isotype:	IgG
Clonality:	Polyclonal
Immunogen:	The immunogen for anti-TMEM190 antibody is: synthetic peptide directed towards the C-terminal region of Human TMEM190. Synthetic peptide located within the following region: SVSLLSKHRGTTKTPSTGSPVALSKESRDVEGGTEGEGTEEGEETEGEE
Formulation:	Liquid. Purified antibody supplied in 1x PBS buffer with 0.09% (w/v) sodium azide and 2% sucrose.
Purification:	Affinity Purified
Conjugation:	Unconjugated
Storage:	Store at -20°C as received.
Stability:	Stable for 12 months from date of receipt.
Predicted Protein Size:	19 kDa
Gene Name:	transmembrane protein 190
Database Link:	<a href="#">NP_631911</a> <a href="#">Entrez Gene 147744 Human</a> <a href="#">Q8WZ59</a>
Background:	The function of this protein remains unknown.
Synonyms:	MDAC1
Note:	Immunogen Sequence Homology: Human: 100%
Protein Families:	Transmembrane



[View online »](#)

**Product images:**


Host: Rabbit; Target Name: TMEM190; Sample  
Tissue: Fetal Heart lysates; Antibody Dilution: 1.0  
ug/ml