

Product datasheet for **TA334781**

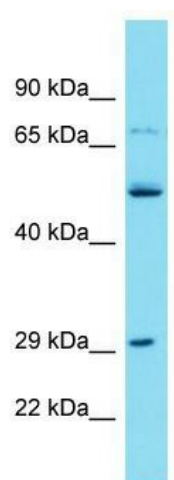
TMEM199 Rabbit Polyclonal Antibody

Product data:

Product Type:	Primary Antibodies
Applications:	WB
Recommended Dilution:	WB
Reactivity:	Human
Host:	Rabbit
Isotype:	IgG
Clonality:	Polyclonal
Immunogen:	The immunogen for anti-TMEM199 antibody is: synthetic peptide directed towards the N-terminal region of Human TMEM199. Synthetic peptide located within the following region: KPPRNPELVARLEKIKIQLANEEYKRITRNVTCQDTRHGGTSLSDLGKQVR
Formulation:	Liquid. Purified antibody supplied in 1x PBS buffer with 0.09% (w/v) sodium azide and 2% sucrose.
Purification:	Affinity Purified
Conjugation:	Unconjugated
Storage:	Store at -20°C as received.
Stability:	Stable for 12 months from date of receipt.
Predicted Protein Size:	32 kDa
Gene Name:	transmembrane protein 199
Database Link:	NP_689677 Entrez Gene 147007 Human Q8N511
Background:	The function of this protein remains unknown.
Synonyms:	C17orf32; CDG2P; VMA12; VPH2
Note:	Immunogen Sequence Homology: Dog: 100%; Pig: 100%; Rat: 100%; Human: 100%; Mouse: 100%; Bovine: 100%; Rabbit: 100%; Horse: 93%; Guinea pig: 93%; Zebrafish: 81%
Protein Families:	Transmembrane


[View online »](#)

Product images:



Host: Rabbit; Target Name: TMEM199; Sample
Tissue: Jurkat Whole Cell lysates; Antibody
Dilution: 1.0 ug/ml