

Product datasheet for TA334779

SNAPC3 Rabbit Polyclonal Antibody

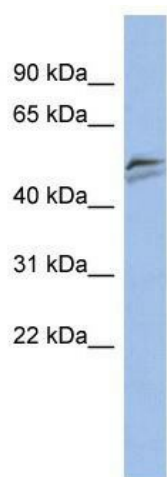
Product data:

Product Type:	Primary Antibodies
Applications:	WB
Recommended Dilution:	WB
Reactivity:	Human
Host:	Rabbit
Isotype:	IgG
Clonality:	Polyclonal
Immunogen:	The immunogen for anti-SNAPC3 antibody: synthetic peptide directed towards the middle region of human SNAPC3. Synthetic peptide located within the following region: LRDSIRCVDLQIGGEFSNTPDQAPAHISKDLYKSAFFYFEGTFYNDKRY
Formulation:	Liquid. Purified antibody supplied in 1x PBS buffer with 0.09% (w/v) sodium azide and 2% sucrose.
Purification:	Affinity Purified
Conjugation:	Unconjugated
Storage:	Store at -20°C as received.
Stability:	Stable for 12 months from date of receipt.
Predicted Protein Size:	47 kDa
Gene Name:	small nuclear RNA activating complex polypeptide 3
Database Link:	NP_001034786 Entrez Gene 6619 Human Q92966
Background:	SNAPC3 is part of the SNAPc complex required for the transcription of both RNA polymerase II and III small-nuclear RNA genes. SNAPC3 binds to the proximal sequence element (PSE), a non-TATA-box basal promoter element common to these 2 types of genes. SNAP
Synonyms:	PTFbeta; SNAP50
Note:	Immunogen Sequence Homology: Dog: 100%; Pig: 100%; Rat: 100%; Horse: 100%; Human: 100%; Mouse: 100%; Bovine: 100%; Rabbit: 100%; Guinea pig: 100%


[View online »](#)

Protein Families: Transcription Factors

Product images:



WB Suggested Anti-SNAPC3 Antibody Titration:
0.2-1 ug/ml; ELISA Titer: 1:62500; Positive Control:
PANC1 cell lysate