

## Product datasheet for **TA334778**

### SNF5 (SMARCB1) Rabbit Polyclonal Antibody

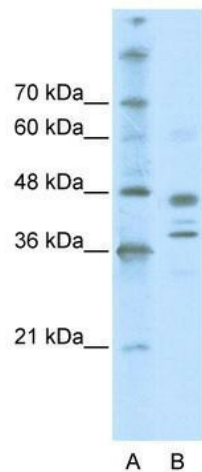
#### Product data:

|                         |  |
|-------------------------|--|
| Product Type:           | Primary Antibodies   |
| Applications:           | WB   |
| Recommended Dilution:   | WB   |
| Reactivity:             | Human  |
| Host:                   | Rabbit   |
| Isotype:                | IgG  |
| Clonality:              | Polyclonal   |
| Immunogen:              | The immunogen for anti-SMARCB1 antibody: synthetic peptide directed towards the middle region of human SMARCB1. Synthetic peptide located within the following region:<br>ILCDDLNLNPLTFVPAIASAIRQQIESYPTDSILEDQSDQRVVIKLNHIV |
| Formulation:            | Liquid. Purified antibody supplied in 1x PBS buffer with 0.09% (w/v) sodium azide and 2% sucrose.<br><i>Note that this product is shipped as lyophilized powder to China customers.</i>                                      |
| Purification:           | Affinity Purified  |
| Conjugation:            | Unconjugated   |
| Storage:                | Store at -20°C as received.  |
| Stability:              | Stable for 12 months from date of receipt.   |
| Predicted Protein Size: | 43 kDa   |
| Gene Name:              | SWI/SNF related, matrix associated, actin dependent regulator of chromatin, subfamily b, member 1  |
| Database Link:          | <a href="#">NP_001007469</a><br><a href="#">Entrez Gene 6598 Human</a><br><a href="#">Q12824</a>   |



[View online »](#)

|                          |  |
|--------------------------|--|
| <b>Background:</b>       | The protein encoded by SMARCB1 is part of a complex that relieves repressive chromatin structures, allowing the transcriptional machinery to access its targets more effectively. The encoded nuclear protein may also bind to and enhance the DNA joining activity of HIV-1 integrase. SMARCB1 has been found to be a tumor suppressor, and mutations in it have been associated with malignant rhabdoid tumors. The protein encoded by this gene is part of a complex that relieves repressive chromatin structures, allowing the transcriptional machinery to access its targets more effectively. The encoded nuclear protein may also bind to and enhance the DNA joining activity of HIV-1 integrase. This gene has been found to be a tumor suppressor, and mutations in it have been associated with malignant rhabdoid tumors. Two transcript variants encoding different isoforms have been found for this gene. |
| <b>Synonyms:</b>         | BAF47; CSS3; hSNFS; INI1; MRD15; PPP1R144; RDT; RTPS1; Sfh1p; SNF5; SNF5L1; Snr1; SWNTS1   |
| <b>Note:</b>             | Immunogen Sequence Homology: Dog: 100%; Pig: 100%; Rat: 100%; Human: 100%; Mouse: 100%; Bovine: 100%; Rabbit: 100%; Guinea pig: 100%; Zebrafish: 92%   |
| <b>Protein Families:</b> | Transcription Factors  |

**Product images:**

WB Suggested Anti-SMARCB1 Antibody Titration: 0.2-1 ug/ml; ELISA Titer: 1:62500; Positive Control: Jurkat cell lysate. SMARCB1 is supported by BioGPS gene expression data to be expressed in Jurkat