

Product datasheet for **TA334775**

Recoverin (RCVRN) Rabbit Polyclonal Antibody

Product data:

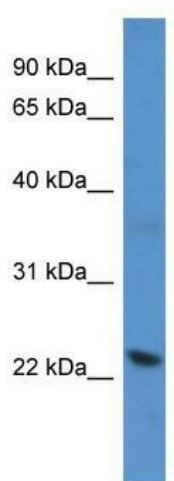
Product Type:	Primary Antibodies
Applications:	WB
Recommended Dilution:	WB
Reactivity:	Human
Host:	Rabbit
Isotype:	IgG
Clonality:	Polyclonal
Immunogen:	The immunogen for anti-RCVRN antibody: synthetic peptide directed towards the C terminal of human RCVRN. Synthetic peptide located within the following region: DVKLLPDDENTPEKRAEKIWKYFGKNDDDKLTEKEFIEGTLANKEILRLI
Formulation:	Liquid. Purified antibody supplied in 1x PBS buffer with 0.09% (w/v) sodium azide and 2% sucrose. <i>Note that this product is shipped as lyophilized powder to China customers.</i>
Purification:	Affinity Purified
Conjugation:	Unconjugated
Storage:	Store at -20°C as received.
Stability:	Stable for 12 months from date of receipt.
Predicted Protein Size:	23 kDa
Gene Name:	recoverin
Database Link:	NP_002894 Entrez Gene 5957 Human P35243
Background:	RCVRN is a member of the recoverin family of neuronal calcium sensors. The protein contains three calcium-binding EF-hand domains and may prolong the termination of the phototransduction cascade in the retina by blocking the phosphorylation of photo-activated rhodopsin. Recoverin may be the antigen responsible for cancer-associated retinopathy.
Synonyms:	RCV1



[View online »](#)

Note: Immunogen Sequence Homology: Horse: 100%; Human: 100%; Bovine: 100%; Dog: 93%; Pig: 93%; Rat: 93%; Mouse: 93%; Rabbit: 86%; Guinea pig: 86%

Product images:



WB Suggested Anti-RCVRN Antibody; Titration: 1.0 ug/ml; Positive Control: Jurkat Whole Cell