

Product datasheet for **TA334771**

Atrophin 1 (ATN1) Rabbit Polyclonal Antibody

Product data:

Product Type:	Primary Antibodies
Applications:	WB
Recommended Dilution:	WB
Reactivity:	Human
Host:	Rabbit
Isotype:	IgG
Clonality:	Polyclonal
Immunogen:	The immunogen for anti-ATN1 antibody: synthetic peptide directed towards the N terminal of human ATN1. Synthetic peptide located within the following region: VSTSSSDGKAEKSRQTAKKARVEEASTPKV NKQGRSEEISESESEETNAP
Formulation:	Liquid. Purified antibody supplied in 1x PBS buffer with 0.09% (w/v) sodium azide and 2% sucrose. <i>Note that this product is shipped as lyophilized powder to China customers.</i>
Purification:	Affinity Purified
Conjugation:	Unconjugated
Storage:	Store at -20°C as received.
Stability:	Stable for 12 months from date of receipt.
Predicted Protein Size:	125 kDa
Gene Name:	atrophin 1
Database Link:	NP_001931 Entrez Gene 1822 Human P54259



[View online »](#)

Background:

Dentatorubral pallidoluysian atrophy is a rare neurodegenerative disorder characterized by cerebellar ataxia, myoclonic epilepsy, choreoathetosis, and dementia. The disorder is related to the expansion of a trinucleotide repeat within ATN1. The protein includes a serine repeat and a region of alternating acidic and basic amino acids, as well as the variable glutamine repeat. Alternative splicing results in two transcripts variants that encode the same protein. Dentatorubral pallidoluysian atrophy is a rare neurodegenerative disorder characterized by cerebellar ataxia, myoclonic epilepsy, choreoathetosis, and dementia. The disorder is related to the expansion of a trinucleotide repeat within this gene. The encoded protein includes a serine repeat and a region of alternating acidic and basic amino acids, as well as the variable glutamine repeat. Alternative splicing results in two transcripts variants that encode the same protein.

Synonyms:

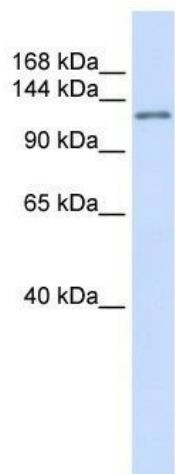
B37; D12S755E; DRPLA; HRS; NOD

Note:

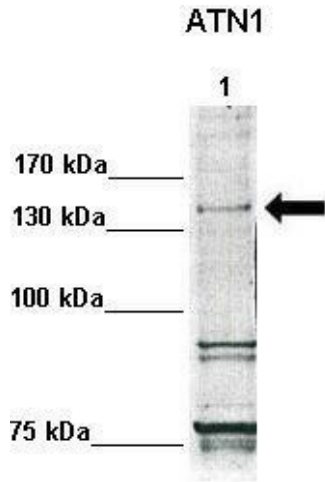
Immunogen Sequence Homology: Human: 100%; Rabbit: 100%; Dog: 93%; Pig: 93%; Rat: 93%; Horse: 93%; Bovine: 93%; Mouse: 86%

Protein Families:

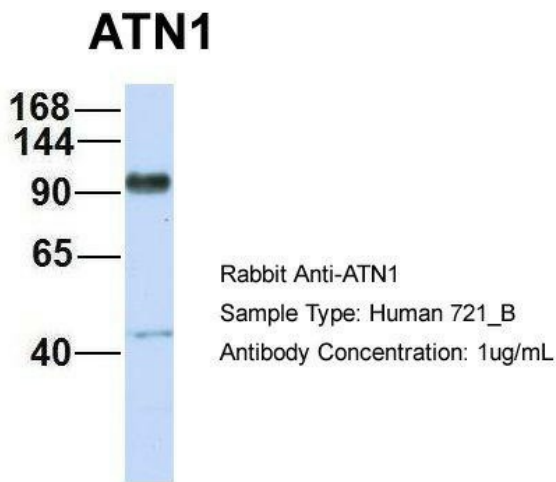
Druggable Genome

Product images:

WB Suggested Anti-ATN1 Antibody Titration: 0.2-1 ug/ml; ELISA Titer: 1:1562500; Positive Control: Human Placenta



WB Suggested Anti-ATN1 Antibody ; Positive Control: Lane 1: 30ug human fibroblasts; Primary Antibody Dilution : 1:500; Secondary Antibody : Anti-rabbit-HRP; Secondary Antibody Dilution : 1:1000; Submitted by: Anonymous



Host: Rabbit; Target Name: ATN1; Sample Tissue: 721_B; Antibody Dilution: 1.0 ug/ml; There is BioGPS gene expression data showing that ATN1 is expressed in 721_B