

Product datasheet for **TA334768**

RFP2 (TRIM13) Rabbit Polyclonal Antibody

Product data:

Product Type:	Primary Antibodies
Applications:	WB
Recommended Dilution:	WB
Reactivity:	Human
Host:	Rabbit
Isotype:	IgG
Clonality:	Polyclonal
Immunogen:	The immunogen for anti-RFP2 antibody: synthetic peptide directed towards the middle region of human RFP2. Synthetic peptide located within the following region: KVKEFFEKLQHTLDQKKNEILSDFETMKLAVMQAYDPEINKLNTILQEQR
Formulation:	Liquid. Purified antibody supplied in 1x PBS buffer with 0.09% (w/v) sodium azide and 2% sucrose. <i>Note that this product is shipped as lyophilized powder to China customers.</i>
Purification:	Protein A purified
Conjugation:	Unconjugated
Storage:	Store at -20°C as received.
Stability:	Stable for 12 months from date of receipt.
Predicted Protein Size:	45 kDa
Gene Name:	tripartite motif containing 13
Database Link:	NP_434698 Entrez Gene 10206 Human O60858
Background:	The protein encoded by RFP2 is a member of the tripartite motif (TRIM) family. The TRIM motif includes three zinc-binding domains, a RING, a B-box type 1 and a B-box type 2, and a coiled-coil region. The protein localizes to cytoplasmic bodies near the nucleus, but its function is unknown. RFP2 is located on chromosome 13 within the minimal deletion region for B-cell chronic lymphocytic leukemia.
Synonyms:	CAR; DLEU5; LEU5; RFP2; RNF77

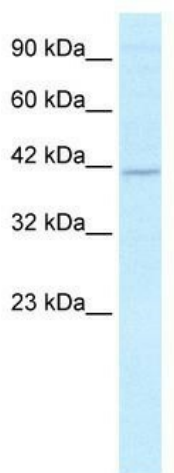


[View online »](#)

Note: Immunogen Sequence Homology: Dog: 100%; Pig: 100%; Rat: 100%; Horse: 100%; Human: 100%; Mouse: 100%; Rabbit: 100%; Guinea pig: 100%; Bovine: 93%

Protein Families: Transmembrane

Product images:



WB Suggested Anti-RFP2 Antibody Titration: 2.5 ug/ml; Positive Control: Jurkat cell lysate TRIM13 is supported by BioGPS gene expression data to be expressed in Jurkat