

Product datasheet for **TA334767**

RFP2 (TRIM13) Rabbit Polyclonal Antibody

Product data:

Product Type:	Primary Antibodies
Applications:	IHC, WB
Recommended Dilution:	WB, IHC
Reactivity:	Human
Host:	Rabbit
Isotype:	IgG
Clonality:	Polyclonal
Immunogen:	The immunogen for anti-RFP2 antibody: synthetic peptide directed towards the middle region of human RFP2. Synthetic peptide located within the following region: DTLETSKRKSLQLLTKDSDKVKEFFEKLQHTLDQKKNEILSDFETMKLAV
Formulation:	Liquid. Purified antibody supplied in 1x PBS buffer with 0.09% (w/v) sodium azide and 2% sucrose.
Purification:	Affinity Purified
Conjugation:	Unconjugated
Storage:	Store at -20°C as received.
Stability:	Stable for 12 months from date of receipt.
Predicted Protein Size:	47 kDa
Gene Name:	tripartite motif containing 13
Database Link:	NP_001007279 Entrez Gene 10206 Human O60858
Background:	The protein encoded by the RFP2 gene is a member of the tripartite motif (TRIM) family. The TRIM motif includes three zinc-binding domains, a RING, a B-box type 1 and a B-box type 2, and a coiled-coil region. The protein localizes to cytoplasmic bodies near the nucleus, but its function is unknown. The gene is located on chromosome 13 within the minimal deletion region for B-cell chronic lymphocytic leukemia.
Synonyms:	CAR; DLEU5; LEU5; RFP2; RNF77

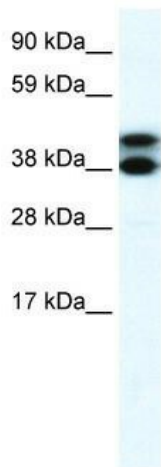


[View online »](#)

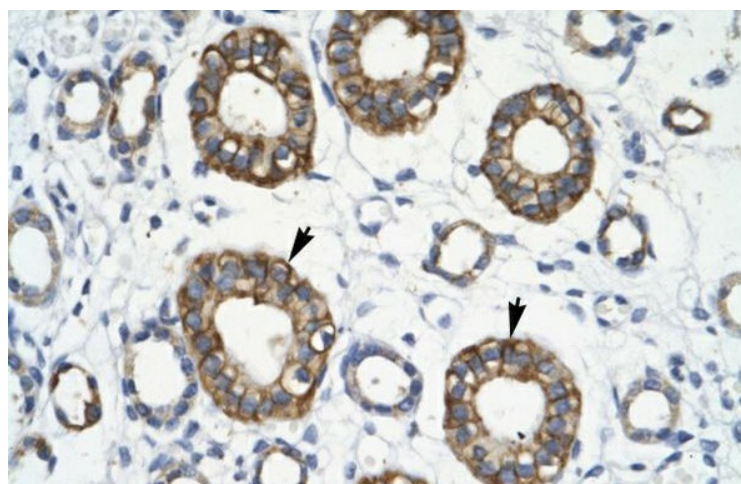
Note: Immunogen Sequence Homology: Pig: 100%; Rat: 100%; Horse: 100%; Human: 100%; Bovine: 100%; Rabbit: 100%; Guinea pig: 100%; Dog: 93%; Mouse: 93%

Protein Families: Transmembrane

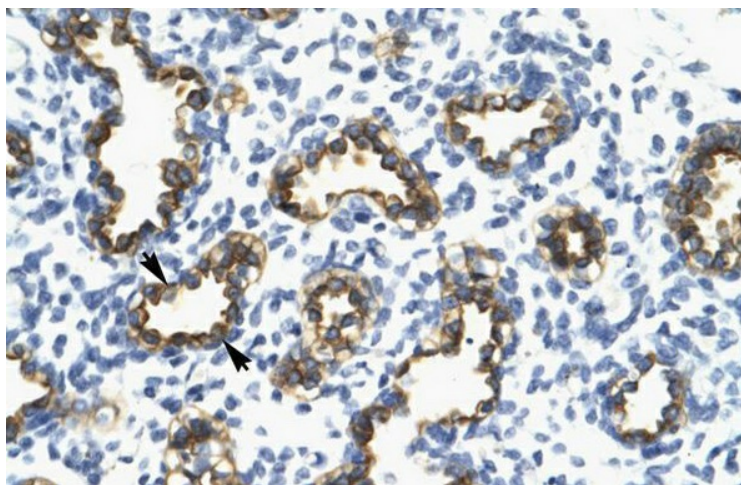
Product images:



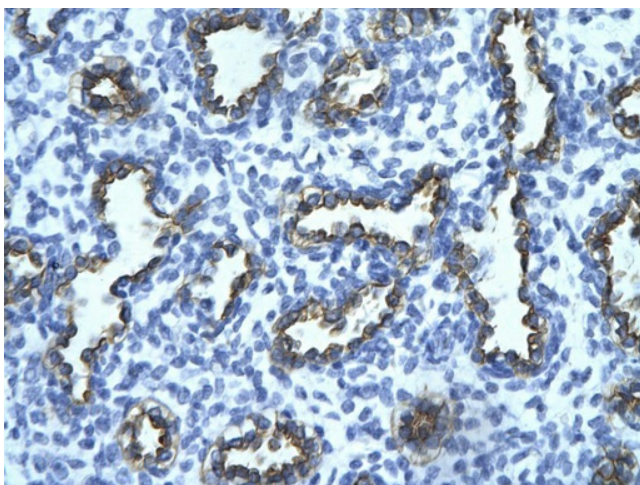
WB Suggested Anti-RFP2 Antibody Titration: 0.125 ug/ml; ELISA Titer: 1:62500; Positive Control: Human Lung



Human kidney



Human Lung



Rabbit Anti-TRIM13 Antibody; Paraffin Embedded
Tissue: Human alveolar cell; Cellular Data:
Epithelial cells of renal tubule; Antibody
Concentration: 4.0-8.0 ug/ml; Magnification: 400X