

Product datasheet for **TA334766**

Tryptophan 5 hydroxylase 2 (TPH2) Rabbit Polyclonal Antibody

Product data:

Product Type:	Primary Antibodies
Applications:	WB
Recommended Dilution:	WB
Reactivity:	Human
Host:	Rabbit
Isotype:	IgG
Clonality:	Polyclonal
Immunogen:	The immunogen for anti-TPH2 antibody: synthetic peptide directed towards the N terminal of human TPH2. Synthetic peptide located within the following region: REATESGKTAVVFLKNEVGGLVKALRLFQEKRVNMMVHIESRKSRSS
Formulation:	Liquid. Purified antibody supplied in 1x PBS buffer with 0.09% (w/v) sodium azide and 2% sucrose. <i>Note that this product is shipped as lyophilized powder to China customers.</i>
Purification:	Affinity Purified
Conjugation:	Unconjugated
Storage:	Store at -20°C as received.
Stability:	Stable for 12 months from date of receipt.
Predicted Protein Size:	56 kDa
Gene Name:	tryptophan hydroxylase 2
Database Link:	NP_775489 Entrez Gene 121278 Human Q8IWU9
Background:	Tryptophan hydroxylase (TPH; EC 1.14.16.4) is the rate-limiting enzyme in the synthesis of serotonin (5-hydroxytryptamine, or 5HT). 5HT is causally involved in numerous central nervous activities, and it has several functions in peripheral tissues, including the maintenance of vascular tone and gut motility.
Synonyms:	ADHD7; NTPH



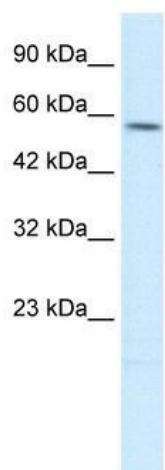
[View online »](#)

Note: Immunogen Sequence Homology: Dog: 100%; Pig: 100%; Human: 100%; Bovine: 100%; Rabbit: 100%; Rat: 92%; Mouse: 92%; Horse: 85%; Guinea pig: 83%

Protein Families: Druggable Genome

Protein Pathways: Metabolic pathways, Tryptophan metabolism

Product images:



WB Suggested Anti-TPH2 Antibody Titration: 0.2-1 ug/ml; Positive Control: HepG2 cell lysate