

## Product datasheet for **TA334763**

### Membralin (TMEM259) Rabbit Polyclonal Antibody

#### Product data:

Product Type:	Primary Antibodies
Applications:	IHC, WB
Recommended Dilution:	WB, IHC
Reactivity:	Human
Host:	Rabbit
Isotype:	IgG
Clonality:	Polyclonal
Immunogen:	The immunogen for anti-C19ORF6 antibody: synthetic peptide directed towards the middle region of human C19ORF6. Synthetic peptide located within the following region: YDDILMSSVKGLAENEENKGFRLRNVSQGEHYRFVSMWMARTSYLAFAIM
Formulation:	Liquid. Purified antibody supplied in 1x PBS buffer with 0.09% (w/v) sodium azide and 2% sucrose. <i>Note that this product is shipped as lyophilized powder to China customers.</i>
Purification:	Protein A purified
Conjugation:	Unconjugated
Storage:	Store at -20°C as received.
Stability:	Stable for 12 months from date of receipt.
Predicted Protein Size:	46 kDa
Gene Name:	transmembrane protein 259
Database Link:	<a href="#">NP_219488</a> <a href="#">Entrez Gene 91304 Human</a> <a href="#">Q4ZIN3</a>



[View online »](#)

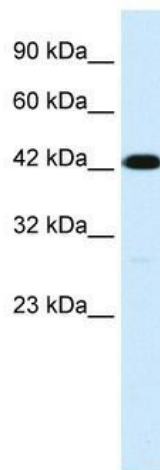
**Background:** Human membralin is unique and does not share significant sequence homology with other human genes, only membralins of other species. The membralin gene contains 11 exons which encode at least two spliced variants in human cancer. The long form of membralin (membralin-1) comprises all 11 exons, encoding a protein of 620-amino acids long and the short form of membralin (membralin-3) contains all exons except for exon 10, encoding a protein of 408 amino acids. Expression of different membralin isoforms depends on tissue type. The long form, membralin-1, is expressed in ovarian and colorectal carcinomas but not in breast or pancreatic carcinomas, which express only the short splice form, membralin-3. Recent studies suggest that membralin is a novel tumor-associated marker in ovarian serous carcinomas

**Synonyms:** ASBABP1; C19orf6; MBRL; MEMBRALIN; R32184\_3

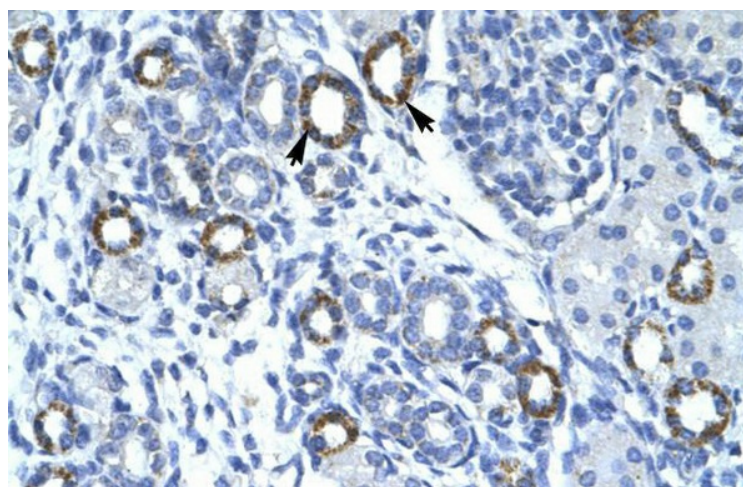
**Note:** Immunogen Sequence Homology: Dog: 100%; Pig: 100%; Rat: 100%; Human: 100%; Mouse: 100%; Bovine: 100%; Zebrafish: 100%; Guinea pig: 100%

**Protein Families:** Transmembrane

### Product images:



WB Suggested Anti-C19ORF6 Antibody Titration: 1.0 ug/ml; ELISA Titer: 1:62500; Positive Control: Jurkat cell lysate TMEM259 is strongly supported by BioGPS gene expression data to be expressed in Human Jurkat cells



Human kidney