

## Product datasheet for **TA334761**

### **TMEM121B Rabbit Polyclonal Antibody**

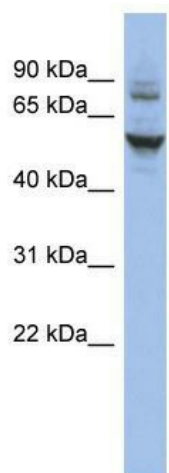
#### **Product data:**

Product Type:	Primary Antibodies
Applications:	WB
Recommended Dilution:	WB
Reactivity:	Human
Host:	Rabbit
Isotype:	IgG
Clonality:	Polyclonal
Immunogen:	The immunogen for anti-CECR6 antibody: synthetic peptide directed towards the N terminal of human CECR6. Synthetic peptide located within the following region: STGAERDDDESLSVSKPLVPNAALLGPPAQVGAPAGPAPVAFSSSAATS
Formulation:	Liquid. Purified antibody supplied in 1x PBS buffer with 0.09% (w/v) sodium azide and 2% sucrose. <i>Note that this product is shipped as lyophilized powder to China customers.</i>
Purification:	Affinity Purified
Conjugation:	Unconjugated
Storage:	Store at -20°C as received.
Stability:	Stable for 12 months from date of receipt.
Predicted Protein Size:	58 kDa
Gene Name:	cat eye syndrome chromosome region, candidate 6
Database Link:	<a href="#">NP_114096</a> <a href="#">Entrez Gene 27439 Human</a> <a href="#">Q9BXQ6</a>
Background:	The exact function of CECR6 remains unknown.
Synonyms:	candidate 6; cat eye syndrome chromosome region; OTTHUMP00000028726
Note:	Immunogen Sequence Homology: Human: 100%; Rat: 86%; Mouse: 86%
Protein Families:	Transmembrane



[View online »](#)

## Product images:



WB Suggested Anti-CECR6 Antibody Titration: 0.2-1 ug/ml; ELISA Titer: 1:312500; Positive Control: HT1080 cell lysate