

Product datasheet for TA334760

USE1 Rabbit Polyclonal Antibody

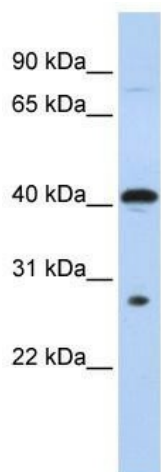
Product data:

Product Type:	Primary Antibodies
Applications:	IHC, WB
Recommended Dilution:	WB, IHC
Reactivity:	Human
Host:	Rabbit
Isotype:	IgG
Clonality:	Polyclonal
Immunogen:	The immunogen for anti-USE1 antibody: synthetic peptide directed towards the middle region of human USE1. Synthetic peptide located within the following region: ARSLKTNLAAQSVIKKDNQTLSHSLKMADQNLEKLTESERLEQHTQKS
Formulation:	Liquid. Purified antibody supplied in 1x PBS buffer with 0.09% (w/v) sodium azide and 2% sucrose. <i>Note that this product is shipped as lyophilized powder to China customers.</i>
Purification:	Affinity Purified
Conjugation:	Unconjugated
Storage:	Store at -20°C as received.
Stability:	Stable for 12 months from date of receipt.
Predicted Protein Size:	29 kDa
Gene Name:	unconventional SNARE in the ER 1
Database Link:	NP_060937 Entrez Gene 55850 Human Q9NZ43
Background:	MDS032 belongs to the USE1 family and is a component of a SNARE complex which may be involved in targeting and fusion of Golgi-derived retrograde transport vesicles with the ER.
Synonyms:	D12; MDS032; P31; SLT1
Note:	Immunogen Sequence Homology: Pig: 100%; Rat: 100%; Horse: 100%; Human: 100%; Mouse: 100%; Bovine: 100%; Guinea pig: 100%; Dog: 93%; Zebrafish: 77%

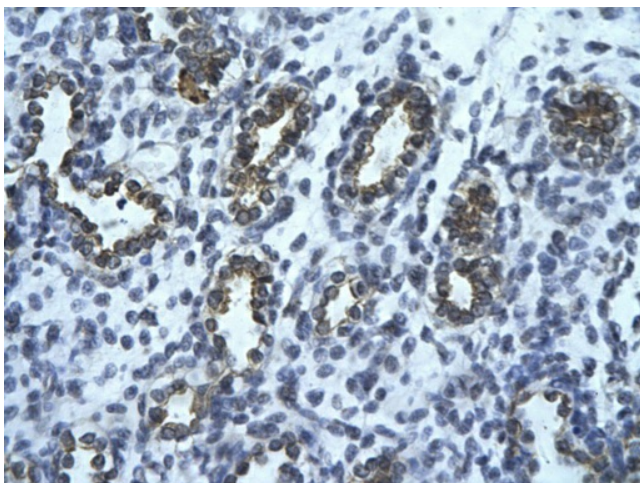


[View online »](#)

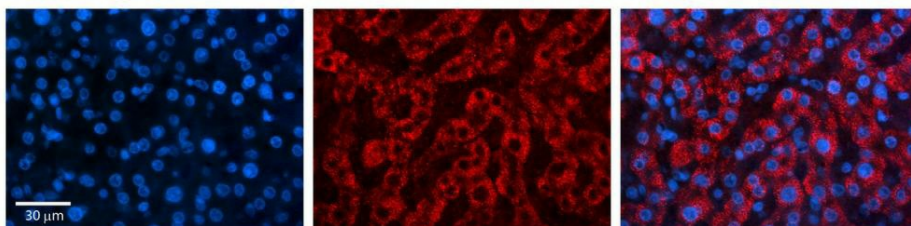
Protein Families: Transmembrane
 Protein Pathways: SNARE interactions in vesicular transport

Product images:


WB Suggested Anti-USE1 Antibody Titration: 0.2-1 ug/ml; ELISA Titer: 1:62500; Positive Control: 721_B cell lysate USE1 is supported by BioGPS gene expression data to be expressed in 721_B



Rabbit Anti-USE1 Antibody; Paraffin Embedded Tissue: Human alveolar cell; Cellular Data: Epithelial cells of renal tubule; Antibody Concentration: 4.0-8.0 ug/ml; Magnification: 400X



Human Liver Tissue