

Product datasheet for **TA334759**

RCOR3 Rabbit Polyclonal Antibody

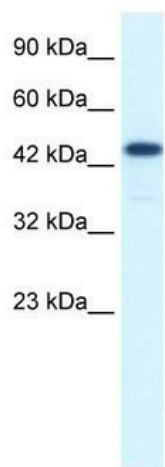
Product data:

Product Type:	Primary Antibodies
Applications:	IHC, WB
Recommended Dilution:	WB, IHC
Reactivity:	Human
Host:	Rabbit
Isotype:	IgG
Clonality:	Polyclonal
Immunogen:	The immunogen for anti-RCOR3 antibody: synthetic peptide directed towards the N terminal of human RCOR3. Synthetic peptide located within the following region: MRVGAEYQARIPEFDPGATKYTDKDNKGMLVWSPYHSIPDAKLDEYIAIA
Formulation:	Liquid. Purified antibody supplied in 1x PBS buffer with 0.09% (w/v) sodium azide and 2% sucrose. <i>Note that this product is shipped as lyophilized powder to China customers.</i>
Purification:	Protein A purified
Conjugation:	Unconjugated
Storage:	Store at -20°C as received.
Stability:	Stable for 12 months from date of receipt.
Predicted Protein Size:	56 kDa
Gene Name:	REST corepressor 3
Database Link:	NP_060724 Entrez Gene 55758 Human Q9P2K3
Background:	RCOR3 is a REST corepressor 3 protein located on chromosome 1.
Synonyms:	RP11-318L16.1
Note:	Immunogen Sequence Homology: Dog: 100%; Rat: 100%; Horse: 100%; Human: 100%; Mouse: 100%; Bovine: 100%; Zebrafish: 79%
Protein Families:	Transcription Factors

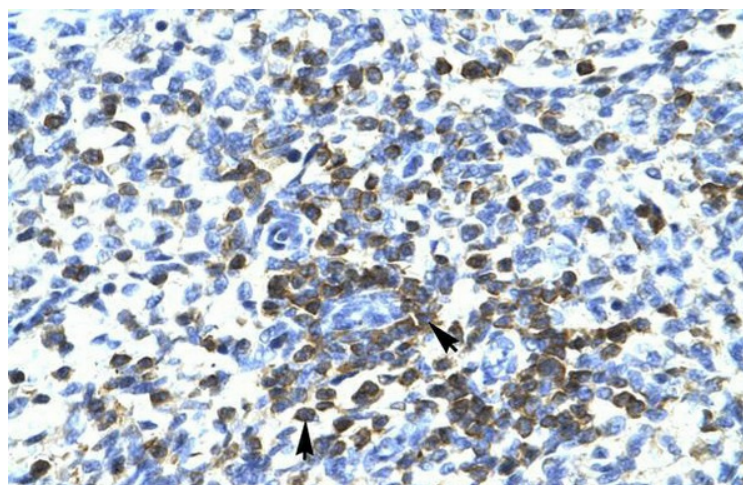


[View online »](#)

Product images:



WB Suggested Anti-RCOR3 Antibody Titration: 1.25 ug/ml; ELISA Titer: 1:62500; Positive Control: Jurkat cell lysate. RCOR3 is supported by BioGPS gene expression data to be expressed in Jurkat



Human Spleen