

Product datasheet for **TA334758**

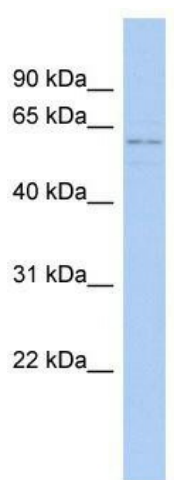
RCOR3 Rabbit Polyclonal Antibody

Product data:

Product Type:	Primary Antibodies
Applications:	WB
Recommended Dilution:	WB
Reactivity:	Human
Host:	Rabbit
Isotype:	IgG
Clonality:	Polyclonal
Immunogen:	The immunogen for anti-RCOR3 antibody: synthetic peptide directed towards the N terminal of human RCOR3. Synthetic peptide located within the following region: QARKLANRHNQGDSDDDVEETHPMDGNDSDYDPKKEAKKEGNTQPVQTS
Formulation:	Liquid. Purified antibody supplied in 1x PBS buffer with 0.09% (w/v) sodium azide and 2% sucrose. <i>Note that this product is shipped as lyophilized powder to China customers.</i>
Purification:	Affinity Purified
Conjugation:	Unconjugated
Storage:	Store at -20°C as received.
Stability:	Stable for 12 months from date of receipt.
Predicted Protein Size:	55 kDa
Gene Name:	REST corepressor 3
Database Link:	NP_060724 Entrez Gene 55758 Human Q9P2K3
Background:	RCOR3 may act as a component of a corepressor complex that represses transcription.
Synonyms:	RP11-318L16.1
Note:	Immunogen Sequence Homology: Dog: 100%; Pig: 100%; Rat: 100%; Horse: 100%; Human: 100%; Mouse: 100%; Bovine: 100%; Rabbit: 100%; Guinea pig: 100%; Zebrafish: 92%
Protein Families:	Transcription Factors



[View online »](#)

Product images:


WB Suggested Anti-RCOR3 Antibody Titration:
 0.2-1 ug/ml; ELISA Titer: 1:62500; Positive Control:
 ACHN cell lysate RCOR3 is supported by BioGPS
 gene expression data to be expressed in ACHN