

## Product datasheet for **TA334757**

### PREB Rabbit Polyclonal Antibody

#### Product data:

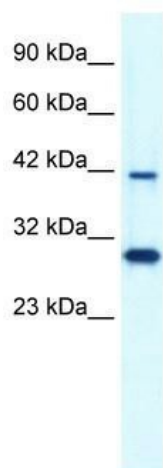
Product Type:	Primary Antibodies
Applications:	IHC, WB
Recommended Dilution:	WB, IHC
Reactivity:	Human
Host:	Rabbit
Isotype:	IgG
Clonality:	Polyclonal
Immunogen:	The immunogen for anti-PREB antibody: synthetic peptide directed towards the N terminal of human PREB. Synthetic peptide located within the following region: RVENLQAVQTDFSSDPLQKVCFNHDNTLLATGGTDGYVRVWKVPSLEKV
Formulation:	Liquid. Purified antibody supplied in 1x PBS buffer with 0.09% (w/v) sodium azide and 2% sucrose. <i>Note that this product is shipped as lyophilized powder to China customers.</i>
Purification:	Affinity Purified
Conjugation:	Unconjugated
Storage:	Store at -20°C as received.
Stability:	Stable for 12 months from date of receipt.
Predicted Protein Size:	45 kDa
Gene Name:	prolactin regulatory element binding
Database Link:	<a href="#">NP_037520</a> <a href="#">Entrez Gene 10113 Human</a> <a href="#">Q9HCU5</a>
Background:	PREB encodes a protein that specifically binds to a Pit1-binding element of the prolactin (PRL) promoter. This protein may act as a transcriptional regulator and is thought to be involved in some of the developmental abnormalities observed in patients with partial trisomy 2p.
Synonyms:	SEC12
Note:	Immunogen Sequence Homology: Pig: 100%; Rat: 100%; Horse: 100%; Human: 100%; Rabbit: 100%; Dog: 92%; Guinea pig: 91%; Mouse: 83%; Bovine: 83%



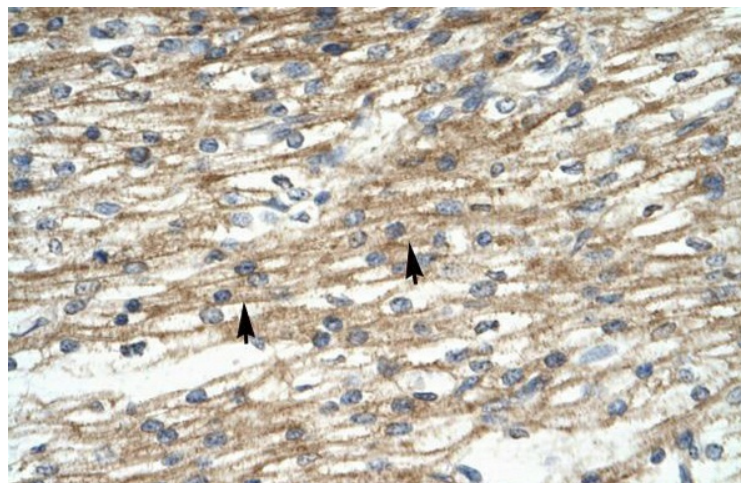
[View online »](#)

Protein Families: Transcription Factors, Transmembrane

### Product images:



WB Suggested Anti-PREB Antibody Titration: 0.2-1 ug/ml; Positive Control: Raji cell lysate PREB is supported by BioGPS gene expression data to be expressed in Raji



Rabbit Anti-PREB Antibody; Paraffin Embedded Tissue: Human cardiac cell; Cellular Data: Epithelial cells of renal tubule; Antibody Concentration: 4.0-8.0 ug/ml; Magnification: 400X