

Product datasheet for **TA334753**

DNA Ligase IV (LIG4) Rabbit Polyclonal Antibody

Product data:

Product Type:	Primary Antibodies
Applications:	IHC, WB
Recommended Dilution:	WB, IHC
Reactivity:	Human
Host:	Rabbit
Isotype:	IgG
Clonality:	Polyclonal
Immunogen:	The immunogen for anti-LIG4 antibody: synthetic peptide directed towards the N terminal of human LIG4. Synthetic peptide located within the following region: DGERMQMHKGDGVYKYFSRNGYNYTDQFGASPTGSLTPFIHNAFKADIQ
Formulation:	Liquid. Purified antibody supplied in 1x PBS buffer with 0.09% (w/v) sodium azide and 2% sucrose. <i>Note that this product is shipped as lyophilized powder to China customers.</i>
Purification:	Protein A purified
Conjugation:	Unconjugated
Storage:	Store at -20°C as received.
Stability:	Stable for 12 months from date of receipt.
Predicted Protein Size:	104 kDa
Gene Name:	DNA ligase 4
Database Link:	NP_002303 Entrez Gene 3981 Human P49917

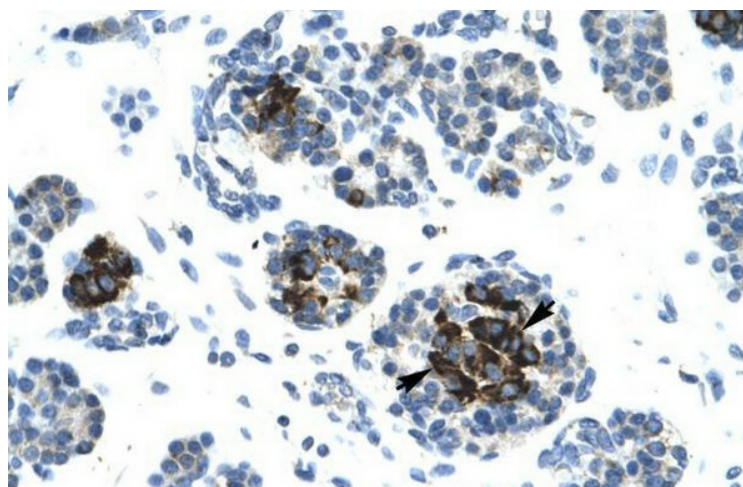


[View online »](#)

- Background:** LIG4 encodes a DNA ligase that joins single-strand breaks in a double-stranded polydeoxynucleotide in an ATP-dependent reaction. This protein is essential for V(D)J recombination and DNA double-strand break (DSB) repair through nonhomologous end joining (NHEJ). This protein forms a complex with the X-ray repair cross complementing protein 4 (XRCC4), and further interacts with the DNA-dependent protein kinase (DNA-PK). Both XRCC4 and DNA-PK are known to be required for NHEJ. The crystal structure of the complex formed by this protein and XRCC4 has been resolved. Defects in this gene are the cause of LIG4 syndrome.
- Synonyms:** LIG4S
- Note:** Immunogen Sequence Homology: Human: 100%; Dog: 93%; Pig: 93%; Rat: 93%; Rabbit: 93%; Guinea pig: 93%; Mouse: 92%; Bovine: 92%; Horse: 86%
- Protein Families:** Druggable Genome
- Protein Pathways:** Non-homologous end-joining
- Product images:**



WB Suggested Anti-LIG4 Antibody Titration: 1.25 ug/ml; Positive Control: HepG2 cell lysate



Human Pancreas