

Product datasheet for **TA334750**

PTGER3 Rabbit Polyclonal Antibody

Product data:

Product Type:	Primary Antibodies
Applications:	WB
Recommended Dilution:	WB
Reactivity:	Human
Host:	Rabbit
Isotype:	IgG
Clonality:	Polyclonal
Immunogen:	The immunogen for anti-PTGER3 antibody: synthetic peptide directed towards the C terminal of human PTGER3. Synthetic peptide located within the following region: LDPWVYLLLRKILLRKFQIRYHTNNYASSSTSLPCQCSSTLMWSDHLER
Formulation:	Liquid. Purified antibody supplied in 1x PBS buffer with 0.09% (w/v) sodium azide and 2% sucrose. <i>Note that this product is shipped as lyophilized powder to China customers.</i>
Purification:	Protein A purified
Conjugation:	Unconjugated
Storage:	Store at -20°C as received.
Stability:	Stable for 12 months from date of receipt.
Predicted Protein Size:	43 kDa
Gene Name:	prostaglandin E receptor 3
Database Link:	NP_000948 Entrez Gene 5733 Human P43115
Background:	PTGER3 is a member of the G-protein coupled receptor family. This protein is one of four receptors identified for prostaglandin E2 (PGE2). This receptor may have many biological functions, which involve digestion, nervous system, kidney reabsorption, and uterine contraction activities. Studies of the mouse counterpart suggest that this receptor may also mediate adrenocorticotrophic hormone response as well as fever generation in response to exogenous and endogenous stimuli.



[View online »](#)

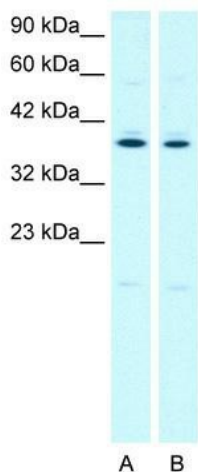
Synonyms: EP3; EP3-I; EP3-II; EP3-III; EP3-IV; EP3e; MGC27302; MGC141828; MGC141829

Note: Immunogen Sequence Homology: Human: 100%; Rabbit: 100%; Horse: 92%

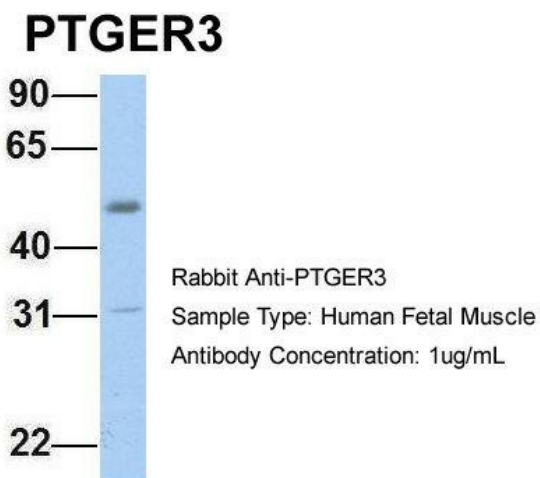
Protein Families: Druggable Genome, GPCR, Transcription Factors, Transmembrane

Protein Pathways: Calcium signaling pathway, Neuroactive ligand-receptor interaction

Product images:



WB Suggested Anti-PTGER3 Antibody Titration: 2.4 ug/ml; Positive Control: Jurkat cell lysate



Host: Rabbit; Target Name: PTGER3; Sample Tissue: Human Fetal Muscle; Antibody Dilution: 1.0 ug/ml