

## Product datasheet for **TA334745**

### GPR75 Rabbit Polyclonal Antibody

#### Product data:

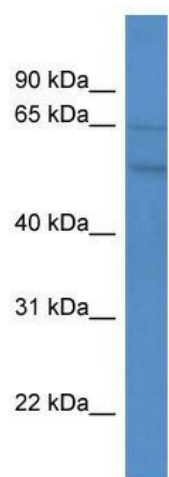
Product Type:	Primary Antibodies
Applications:	WB
Recommended Dilution:	WB
Reactivity:	Human
Host:	Rabbit
Isotype:	IgG
Clonality:	Polyclonal
Immunogen:	The immunogen for anti-GPR75 antibody: synthetic peptide directed towards the C terminal of human GPR75. Synthetic peptide located within the following region: ALYRNQNYNKLQHVQTRGYTKSPNQLVTPAASRLQLVSAINLSTAKDSKA
Formulation:	Liquid. Purified antibody supplied in 1x PBS buffer with 0.09% (w/v) sodium azide and 2% sucrose. <i>Note that this product is shipped as lyophilized powder to China customers.</i>
Purification:	Affinity Purified
Conjugation:	Unconjugated
Storage:	Store at -20°C as received.
Stability:	Stable for 12 months from date of receipt.
Predicted Protein Size:	59 kDa
Gene Name:	G protein-coupled receptor 75
Database Link:	<a href="#">NP_006785</a> <a href="#">Entrez Gene 10936 Human O95800</a>
Background:	GPR75 is a member of the G protein-coupled receptor family. GPRs are cell surface receptors that activate guanine-nucleotide binding proteins upon the binding of a ligand.
Synonyms:	GPRchr2; WI31133
Note:	Immunogen Sequence Homology: Rat: 100%; Human: 100%; Rabbit: 100%; Pig: 92%; Horse: 92%; Mouse: 92%; Bovine: 92%



[View online »](#)

Protein Families: Druggable Genome, GPCR, Transmembrane

### Product images:



WB Suggested Anti-GPR75 Antibody Titration: 0.2-1 ug/ml; ELISA Titer: 1:100; Positive Control: HeLa cell lysate