

## Product datasheet for TA334742

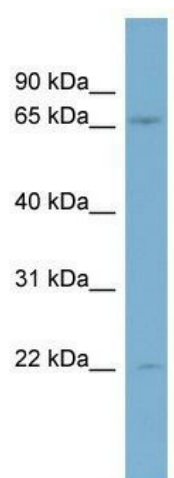
### KIF2B Rabbit Polyclonal Antibody

#### Product data:

Product Type:	Primary Antibodies
Applications:	WB
Recommended Dilution:	WB
Reactivity:	Human
Host:	Rabbit
Isotype:	IgG
Clonality:	Polyclonal
Immunogen:	The immunogen for anti-KIF2B antibody: synthetic peptide directed towards the middle region of human KIF2B. Synthetic peptide located within the following region: DCSKGIYALVAQDVFLLLRNSTYEKLDLKVYGTFFEIYGGKVYDLLNWKK
Formulation:	Liquid. Purified antibody supplied in 1x PBS buffer with 0.09% (w/v) sodium azide and 2% sucrose.
Purification:	Affinity Purified
Conjugation:	Unconjugated
Storage:	Store at -20°C as received.
Stability:	Stable for 12 months from date of receipt.
Predicted Protein Size:	76 kDa
Gene Name:	kinesin family member 2B
Database Link:	<a href="#">NP_115948</a> <a href="#">Entrez Gene 84643 Human</a> <a href="#">Q8N4N8</a>
Background:	KIF2B is the plus end-directed microtubule-dependent motor required for spindle assembly and chromosome movement. KIF2B has microtubule depolymerization activity.
Synonyms:	FLJ53902
Note:	Immunogen Sequence Homology: Dog: 100%; Pig: 100%; Human: 100%; Rabbit: 100%; Guinea pig: 100%; Rat: 93%; Horse: 93%; Mouse: 93%; Bovine: 93%; Zebrafish: 85%
Protein Families:	Druggable Genome



[View online »](#)

**Product images:**

WB Suggested Anti-KIF2B Antibody Titration: 0.2-1 ug/ml; ELISA Titer: 1:312500; Positive Control: Human Thymus