

Product datasheet for **TA334736**

TEAD3 Rabbit Polyclonal Antibody

Product data:

Product Type:	Primary Antibodies
Applications:	WB
Recommended Dilution:	WB
Reactivity:	Human
Host:	Rabbit
Isotype:	IgG
Clonality:	Polyclonal
Immunogen:	The immunogen for anti-TEAD3 antibody: synthetic peptide directed towards the middle region of human TEAD3. Synthetic peptide located within the following region: KFSPPSPLPQAVFSTSSRFWSSPPLLGGQPGPSQDIKPFAQPAYPIQPPL
Formulation:	Liquid. Purified antibody supplied in 1x PBS buffer with 0.09% (w/v) sodium azide and 2% sucrose. <i>Note that this product is shipped as lyophilized powder to China customers.</i>
Purification:	Affinity Purified
Conjugation:	Unconjugated
Storage:	Store at -20°C as received.
Stability:	Stable for 12 months from date of receipt.
Predicted Protein Size:	49 kDa
Gene Name:	TEA domain transcription factor 3
Database Link:	NP_003205 Entrez Gene 7005 Human Q99594



[View online »](#)

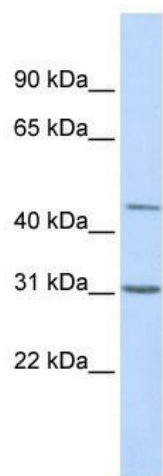
Background: TEAD3 is a member of the transcriptional enhancer factor (TEF) family of transcription factors, which contain the TEA/ATTS DNA-binding domain. It is predominantly expressed in the placenta and is involved in the transactivation of the chorionic somatomammotropin-B gene enhancer. Translation of this protein is initiated at a non-AUG (AUA) start codon. This gene product is a member of the transcriptional enhancer factor (TEF) family of transcription factors, which contain the TEA/ATTS DNA-binding domain. It is predominantly expressed in the placenta and is involved in the transactivation of the chorionic somatomammotropin-B gene enhancer. Translation of this protein is initiated at a non-AUG (AUA) start codon.

Synonyms: DTEF-1; ETFR-1; TEAD-3; TEAD5; TEF-5; TEF5

Note: Immunogen Sequence Homology: Dog: 100%; Pig: 100%; Rat: 100%; Horse: 100%; Human: 100%; Mouse: 100%; Bovine: 100%; Rabbit: 100%; Zebrafish: 100%; Guinea pig: 100%

Protein Families: Transcription Factors

Product images:



WB Suggested Anti-TEAD3 Antibody Titration: 0.2-1 ug/ml; ELISA Titer: 1:62500; Positive Control: Transfected 293T