

Product datasheet for **TA334733**

RGS20 Rabbit Polyclonal Antibody

Product data:

Product Type:	Primary Antibodies
Applications:	IHC, WB
Recommended Dilution:	WB, IHC
Reactivity:	Human
Host:	Rabbit
Isotype:	IgG
Clonality:	Polyclonal
Immunogen:	The immunogen for anti-RGS20 antibody: synthetic peptide directed towards the middle region of human RGS20. Synthetic peptide located within the following region: NAFREFLRTEFSEENMLFWMACEELKKEANKNIIIEEKARIYEDYISILS
Formulation:	Liquid. Purified antibody supplied in 1x PBS buffer with 0.09% (w/v) sodium azide and 2% sucrose. <i>Note that this product is shipped as lyophilized powder to China customers.</i>
Purification:	Protein A purified
Conjugation:	Unconjugated
Storage:	Store at -20°C as received.
Stability:	Stable for 12 months from date of receipt.
Predicted Protein Size:	25 kDa
Gene Name:	regulator of G-protein signaling 20
Database Link:	NP_003693 Entrez Gene 8601 Human O76081
Background:	Regulator of G protein signaling (RGS) proteins are regulatory and structural components of G protein-coupled receptor complexes. RGS proteins are GTPase-activating proteins for Gi class G-alpha proteins. They accelerate transit through the cycle of GTP binding and hydrolysis and thereby accelerate signaling kinetics and termination.
Synonyms:	g(z)GAP; gz-GAP; RGSZ1; ZGAP1

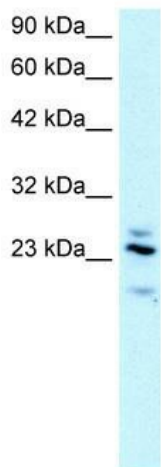


[View online »](#)

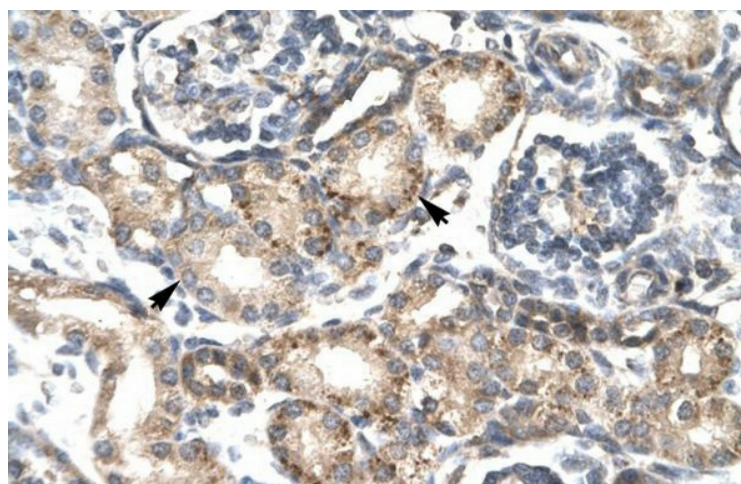
Note: Immunogen Sequence Homology: Pig: 100%; Horse: 100%; Human: 100%; Guinea pig: 100%; Rat: 93%; Rabbit: 93%; Dog: 92%; Bovine: 86%; Zebrafish: 86%; Mouse: 85%

Protein Families: Druggable Genome

Product images:



WB Suggested Anti-RGS20 Antibody Titration: 2.5 ug/ml; Positive Control: Human brain



Human kidney