

Product datasheet for TA334729

RGS14 Rabbit Polyclonal Antibody

Product data:

Product Type:	Primary Antibodies
Applications:	WB
Recommended Dilution:	WB
Reactivity:	Mouse
Host:	Rabbit
Isotype:	IgG
Clonality:	Polyclonal
Immunogen:	The immunogen for anti-Rgs14 antibody is: synthetic peptide directed towards the middle region of Mouse Rgs14. Synthetic peptide located within the following region: LGSPDTARKKPKLPGKSLPLGVEELGQLPLAEGPCGRPLRKSFRREMTG
Formulation:	Liquid. Purified antibody supplied in 1x PBS buffer with 0.09% (w/v) sodium azide and 2% sucrose. <i>Note that this product is shipped as lyophilized powder to China customers.</i>
Purification:	Affinity Purified
Conjugation:	Unconjugated
Storage:	Store at -20°C as received.
Stability:	Stable for 12 months from date of receipt.
Predicted Protein Size:	60 kDa
Gene Name:	regulator of G-protein signaling 14
Database Link:	NP_006471 Entrez Gene 51791 Mouse O43566
Background:	Rgs14 acts as a regulator of G protein signaling (RGS). It modulates G protein alpha subunits nucleotide exchange and hydrolysis activities by functioning either as a GTPase-activating protein (GAP), thereby driving G protein alpha subunits into their inactive GDP-bound form, or as a GDP-dissociation inhibitor (GDI).
Synonyms:	regulator of G-protein signaling 14; regulator of G-protein signalling 14

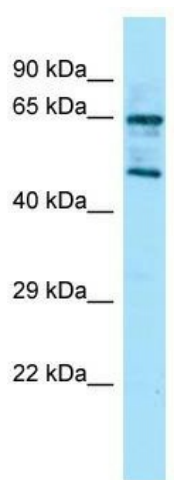


[View online »](#)

Note: Immunogen Sequence Homology: Rat: 100%; Human: 100%; Pig: 93%; Rabbit: 93%; Guinea pig: 93%; Dog: 92%; Bovine: 92%; Mouse: 86%

Protein Families: Druggable Genome

Product images:



Host: Rabbit; Target Name: Rgs14; Sample Tissue: Mouse Stomach lysates; Antibody Dilution: 1.0 ug/ml