

Product datasheet for **TA334728**

RGS19 Rabbit Polyclonal Antibody

Product data:

Product Type:	Primary Antibodies
Applications:	IHC, WB
Recommended Dilution:	WB, IHC
Reactivity:	Human
Host:	Rabbit
Isotype:	IgG
Clonality:	Polyclonal
Immunogen:	The immunogen for anti-RGS19 antibody is: synthetic peptide directed towards the N-terminal region of Human RGS19. Synthetic peptide located within the following region: PTPHEAEKQITGP EEAD RPPSMSSHDTASPAAPSRNPCCCLWCCCCSCSW
Formulation:	Liquid. Purified antibody supplied in 1x PBS buffer with 0.09% (w/v) sodium azide and 2% sucrose. <i>Note that this product is shipped as lyophilized powder to China customers.</i>
Purification:	Affinity Purified
Conjugation:	Unconjugated
Storage:	Store at -20°C as received.
Stability:	Stable for 12 months from date of receipt.
Predicted Protein Size:	25 kDa
Gene Name:	regulator of G-protein signaling 19
Database Link:	NP_005864 Entrez Gene 10287 Human P49795
Background:	G proteins mediate a number of cellular processes. RGS19 belongs to the RGS (regulators of G-protein signaling) family and specifically interacts with G protein, GAI3. This protein is a guanosine triphosphatase-activating protein that functions to down-regulate Galpha i/Galphi q-linked signaling.
Synonyms:	GAIP; RGS19



[View online »](#)

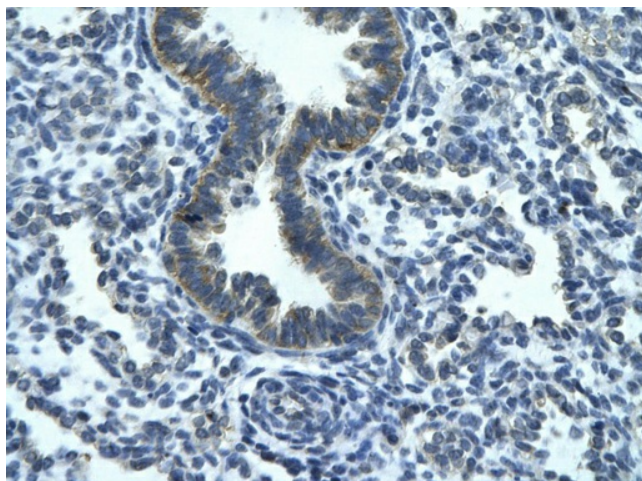
Note: Immunogen Sequence Homology: Human: 100%; Rat: 93%; Horse: 93%; Mouse: 93%; Pig: 92%; Bovine: 92%; Guinea pig: 92%; Dog: 85%

Protein Families: Druggable Genome

Product images:



WB Suggested Anti-RGS19 Antibody Titration: 0.2-1 ug/ml; Positive Control: Human Lung lysate



Rabbit Anti-RGS19 Antibody; Paraffin Embedded Tissue: Human bronchiole epithelium; Cellular Data: Epithelial cells of renal tubule; Antibody Concentration: 4.0-8.0 ug/ml; Magnification: 400X