

## Product datasheet for TA334727

### RGS6 Rabbit Polyclonal Antibody

#### Product data:

Product Type:	Primary Antibodies
Applications:	IHC, WB
Recommended Dilution:	WB, IHC
Reactivity:	Human
Host:	Rabbit
Isotype:	IgG
Clonality:	Polyclonal
Immunogen:	The immunogen for anti-RGS6 antibody: synthetic peptide directed towards the C terminal of human RGS6. Synthetic peptide located within the following region: SAINLDSHSYEITSQNVKDGGRYTFEDAQEHIYKLMKSDSYARFLRSNAY
Formulation:	Liquid. Purified antibody supplied in 1x PBS buffer with 0.09% (w/v) sodium azide and 2% sucrose. <i>Note that this product is shipped as lyophilized powder to China customers.</i>
Purification:	Affinity Purified
Conjugation:	Unconjugated
Storage:	Store at -20°C as received.
Stability:	Stable for 12 months from date of receipt.
Predicted Protein Size:	54 kDa
Gene Name:	regulator of G-protein signaling 6
Database Link:	<a href="#">NP_004287</a> <a href="#">Entrez Gene 9628 Human P49758</a>
Background:	Members of the RGS (regulator of G protein signaling) family have been shown to modulate the functioning of G proteins by activating the intrinsic GTPase activity of the alpha (guanine nucleotide-binding) subunits.
Synonyms:	GAP
Note:	Immunogen Sequence Homology: Dog: 100%; Pig: 100%; Rat: 100%; Horse: 100%; Human: 100%; Mouse: 100%; Bovine: 100%; Guinea pig: 100%; Rabbit: 93%; Zebrafish: 86%



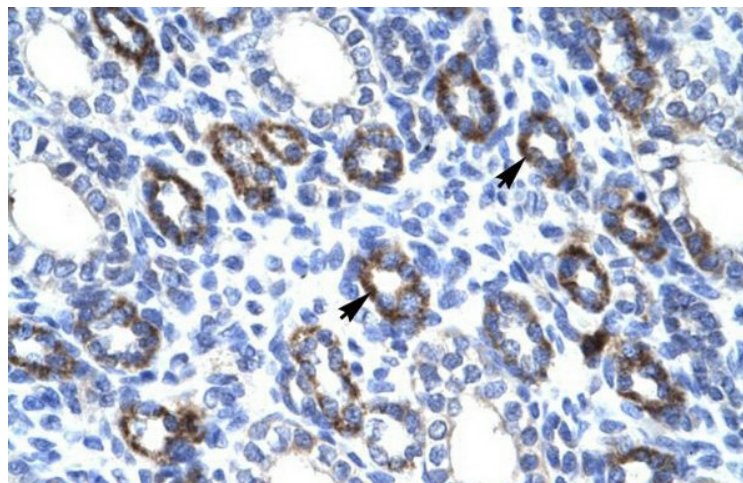
[View online »](#)

Protein Families: Druggable Genome

### Product images:



WB Suggested Anti-RGS6 Antibody Titration: 0.2-1 ug/ml; Positive Control: Jurkat cell lysate



Human kidney