

## Product datasheet for TA334726

### RGS6 Rabbit Polyclonal Antibody

#### Product data:

Product Type:	Primary Antibodies
Applications:	WB
Recommended Dilution:	WB
Reactivity:	Human
Host:	Rabbit
Isotype:	IgG
Clonality:	Polyclonal
Immunogen:	The immunogen for anti-RGS6 antibody: synthetic peptide directed towards the N terminal of human RGS6. Synthetic peptide located within the following region: AQGSGDQRAVGADPEESSNMIVYCKIEDIITKMQDDKTGGVPIRTVKS
Formulation:	Liquid. Purified antibody supplied in 1x PBS buffer with 0.09% (w/v) sodium azide and 2% sucrose. <i>Note that this product is shipped as lyophilized powder to China customers.</i>
Purification:	Affinity Purified
Conjugation:	Unconjugated
Storage:	Store at -20°C as received.
Stability:	Stable for 12 months from date of receipt.
Predicted Protein Size:	54 kDa
Gene Name:	regulator of G-protein signaling 6
Database Link:	<a href="#">NP_004287</a> <a href="#">Entrez Gene 9628 Human P49758</a>
Background:	Members of the RGS (regulator of G protein signaling) family, such as RGS6, modulate G protein function by activating the intrinsic GTPase activity of the alpha (guanine nucleotide-binding) subunits. Members of the RGS (regulator of G protein signaling) family have been shown to modulate the functioning of G proteins by activating the intrinsic GTPase activity of the alpha (guanine nucleotide-binding) subunits. [supplied by OMIM]
Synonyms:	GAP



[View online »](#)

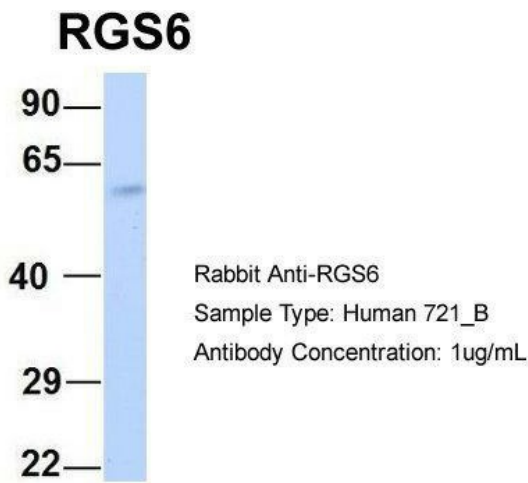
**Note:** Immunogen Sequence Homology: Rat: 100%; Human: 100%; Mouse: 93%

**Protein Families:** Druggable Genome

**Product images:**



WB Suggested Anti-RGS6 Antibody Titration: 0.2-1 ug/ml; ELISA Titer: 1:12500; Positive Control: Jurkat cell lysate



Host: Rabbit; Target Name: RGS6; Sample Tissue: Human 721\_B; Antibody Dilution: 1.0 ug/ml; RGS6 is strongly supported by BioGPS gene expression data to be expressed in Human 721\_B cells