

Product datasheet for **TA334723**

CCRL2 Rabbit Polyclonal Antibody

Product data:

Product Type:	Primary Antibodies
Applications:	WB
Recommended Dilution:	WB
Reactivity:	Human
Host:	Rabbit
Isotype:	IgG
Clonality:	Polyclonal
Immunogen:	The immunogen for anti-CCRL2 antibody: synthetic peptide directed towards the N terminal of human CCRL2. Synthetic peptide located within the following region: LSAQLVPSLCSAVFVIGVLDNLLVVLILVKYKGLKRVENIYLLNLAVSNL
Formulation:	Liquid. Purified antibody supplied in 1x PBS buffer with 0.09% (w/v) sodium azide and 2% sucrose. <i>Note that this product is shipped as lyophilized powder to China customers.</i>
Purification:	Affinity Purified
Conjugation:	Unconjugated
Storage:	Store at -20°C as received.
Stability:	Stable for 12 months from date of receipt.
Predicted Protein Size:	39 kDa
Gene Name:	C-C motif chemokine receptor like 2
Database Link:	NP_003956 Entrez Gene 9034 Human O00421



[View online »](#)

Background:

CCRL2 is a chemokine receptor like protein, which is predicted to be a seven transmembrane protein and most closely related to CCR1. Chemokines and their receptors mediated signal transduction are critical for the recruitment of effector immune cells to the site of inflammation. CCRL2 gene is expressed at high levels in primary neutrophils and primary monocytes, and is further upregulated on neutrophil activation and during monocyte to macrophage differentiation. The function of this gene is unknown. This gene is mapped to the region where the chemokine receptor gene cluster is located. This gene encodes a chemokine receptor like protein, which is predicted to be a seven transmembrane protein and most closely related to CCR1. Chemokines and their receptors mediated signal transduction are critical for the recruitment of effector immune cells to the site of inflammation. This gene is expressed at high levels in primary neutrophils and primary monocytes, and is further upregulated on neutrophil activation and during monocyte to macrophage differentiation. The function of this gene is unknown. This gene is mapped to the region where the chemokine receptor gene cluster is located.

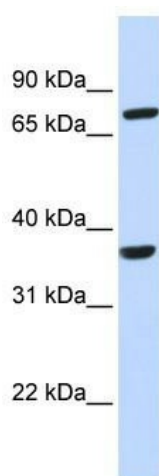
Synonyms:

ACKR5; CKRX; CRAM; CRAM-A; CRAM-B; HCR

Note: Immunogen Sequence Homology: Human: 100%; Mouse: 100%; Horse: 93%; Rabbit: 90%; Pig: 86%; Guinea pig: 86%; Rat: 82%; Bovine: 77%

Protein Families:

Druggable Genome, GPCR, Transmembrane

Product images:

WB Suggested Anti-CCRL2 Antibody Titration: 0.2-1 ug/ml; ELISA Titer: 1:1562500; Positive Control: 721_B cell lysate. CCRL2 is supported by BioGPS gene expression data to be expressed in 721_B