

Product datasheet for **TA334721**

HNF1 beta (HNF1B) Rabbit Polyclonal Antibody

Product data:

Product Type:	Primary Antibodies
Applications:	WB
Recommended Dilution:	WB
Reactivity:	Human, Mouse
Host:	Rabbit
Isotype:	IgG
Clonality:	Polyclonal
Immunogen:	The immunogen for anti-HNF1B antibody: synthetic peptide directed towards the C terminal of human HNF1B. Synthetic peptide located within the following region: QGNNEITSSSTISHHGNSAMVTSQSVLQQVSPASLDPGHLLSPDGKMIS
Formulation:	Liquid. Purified antibody supplied in 1x PBS buffer with 0.09% (w/v) sodium azide and 2% sucrose. <i>Note that this product is shipped as lyophilized powder to China customers.</i>
Purification:	Affinity Purified
Conjugation:	Unconjugated
Storage:	Store at -20°C as received.
Stability:	Stable for 12 months from date of receipt.
Predicted Protein Size:	61 kDa
Gene Name:	HNF1 homeobox B
Database Link:	NP_000449 Entrez Gene 21410 Mouse Entrez Gene 6928 Human P35680
Background:	HNF1B is a member of the transcription factor superfamily. It forms heterodimers with another member of this transcription factor family, HNF1A. Multiple alternatively spliced transcript variants have been described, however the biological validity all of these variants needs to be determined.
Synonyms:	FJHN; HNF-1-beta; HNF-1B; HNF1beta; HNF2; HPC11; LF-B3; LFB3; MODY5; TCF-2; TCF2; VHNF1



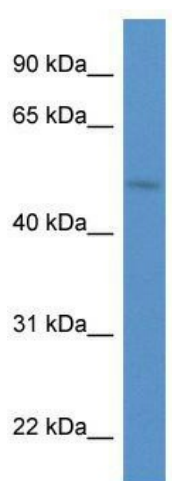
[View online »](#)

Note: Immunogen Sequence Homology: Dog: 100%; Pig: 100%; Rat: 100%; Horse: 100%; Human: 100%; Sheep: 100%; Bovine: 100%; Rabbit: 100%; Guinea pig: 100%; Mouse: 93%

Protein Families: Druggable Genome, Embryonic stem cells, ES Cell Differentiation/IPS, Transcription Factors

Protein Pathways: Maturity onset diabetes of the young

Product images:



WB Suggested Anti-HNF1B Antibody Titration:
0.2-1 ug/ml; ELISA Titer: 1:62500; Positive Control:
ACHN cell lysate HNF1B is supported by BioGPS
gene expression data to be expressed in ACHN