

## Product datasheet for TA334720

### BLZF1 Rabbit Polyclonal Antibody

#### Product data:

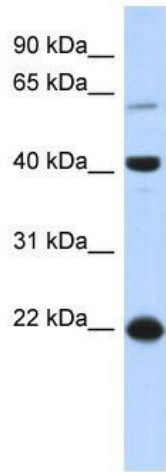
Product Type:	Primary Antibodies
Applications:	WB
Recommended Dilution:	WB
Reactivity:	Human
Host:	Rabbit
Isotype:	IgG
Clonality:	Polyclonal
Immunogen:	The immunogen for anti-BLZF1 antibody: synthetic peptide directed towards the N terminal of human BLZF1. Synthetic peptide located within the following region: EKAMEVKAVRILVPKAAITHDIPNKNTKVKSLGHHKGEFLGQSEGVIEN
Formulation:	Liquid. Purified antibody supplied in 1x PBS buffer with 0.09% (w/v) sodium azide and 2% sucrose. <i>Note that this product is shipped as lyophilized powder to China customers.</i>
Purification:	Affinity Purified
Conjugation:	Unconjugated
Storage:	Store at -20°C as received.
Stability:	Stable for 12 months from date of receipt.
Predicted Protein Size:	45 kDa
Gene Name:	basic leucine zipper nuclear factor 1
Database Link:	<a href="#">NP_003657</a> <a href="#">Entrez Gene 8548 Human</a> <a href="#">Q9H2G9</a>
Background:	BLZF1 is required for normal Golgi structure and for protein transport from the endoplasmic reticulum (ER) through the Golgi apparatus to the cell surface.
Synonyms:	GOLGIN-45; JEM-1; JEM-1s; JEM1
Note:	Immunogen Sequence Homology: Horse: 100%; Human: 100%; Dog: 92%; Rat: 92%; Bovine: 92%; Pig: 85%; Rabbit: 85%; Guinea pig: 85%; Mouse: 83%



[View online »](#)

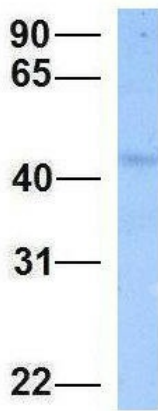
Protein Families: Transcription Factors

Product images:



WB Suggested Anti-BLZF1 Antibody Titration: 0.2-1 ug/ml; ELISA Titer: 1:312500; Positive Control: Human kidney

BLZF1



Rabbit Anti-BLZF1  
Sample Type: Human MCF7  
Antibody Concentration: 1ug/mL

Host: Rabbit; Target Name: BLZF1; Sample Tissue: MCF7; Antibody Dilution: 1.0 ug/ml; BLZF1 is strongly supported by BioGPS gene expression data to be expressed in Human MCF7 cells