

## Product datasheet for **TA334719**

### SHARP2 (BHLHE40) Rabbit Polyclonal Antibody

#### Product data:

Product Type:	Primary Antibodies
Applications:	IHC, WB
Recommended Dilution:	WB, IHC
Reactivity:	Human
Host:	Rabbit
Isotype:	IgG
Clonality:	Polyclonal
Immunogen:	The immunogen for anti-BHLHB2 antibody: synthetic peptide directed towards the middle region of human BHLHB2. Synthetic peptide located within the following region: SEKGDLRSEQPCFKSDHGRRFTMGERIGAIAIKQESEEPPTKKNRMQLSDDE
Formulation:	Liquid. Purified antibody supplied in 1x PBS buffer with 0.09% (w/v) sodium azide and 2% sucrose. <i>Note that this product is shipped as lyophilized powder to China customers.</i>
Purification:	Affinity Purified
Conjugation:	Unconjugated
Storage:	Store at -20°C as received.
Stability:	Stable for 12 months from date of receipt.
Predicted Protein Size:	45 kDa
Gene Name:	basic helix-loop-helix family member e40
Database Link:	<a href="#">NP_003661</a> <a href="#">Entrez Gene 8553 Human</a> <a href="#">O14503</a>



[View online »](#)

**Background:**

BHLHB2 is a basic helix-loop-helix protein expressed in various tissues. Expression in the chondrocytes is responsive to the addition of Bt2cAMP. Differentiated embryo chondrocyte expressed gene 1 is believed to be involved in the control of cell differentiation. DEC1 encodes a basic helix-loop-helix protein expressed in various tissues. Expression in the chondrocytes is responsive to the addition of Bt2cAMP. Differentiated embryo chondrocyte expressed gene 1 is believed to be involved in the control of cell differentiation. DEC1 encodes a basic helix-loop-helix protein expressed in various tissues. Expression in the chondrocytes is responsive to the addition of Bt2cAMP. Differentiated embryo chondrocyte expressed gene 1 is believed to be involved in the control of cell differentiation. Publication Note: This RefSeq record includes a subset of the publications that are available for this gene. Please see the Entrez Gene record to access additional publications.

**Synonyms:**

BHLHB2; DEC1; HLHB2; SHARP-2; STRA13; Stra14

**Note:**

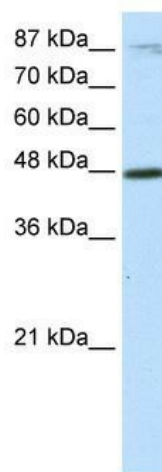
Immunogen Sequence Homology: Pig: 100%; Rat: 100%; Horse: 100%; Human: 100%; Mouse: 100%; Guinea pig: 100%; Dog: 93%; Sheep: 92%; Bovine: 92%; Rabbit: 86%

**Protein Families:**

Transcription Factors

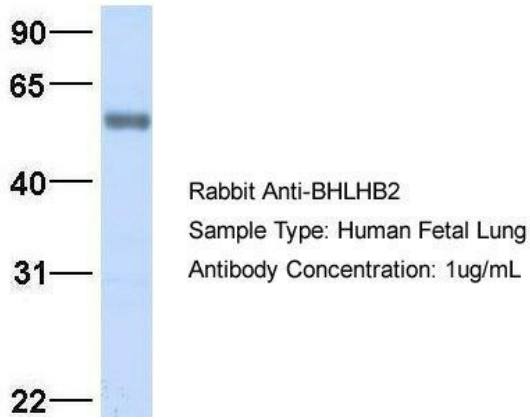
**Protein Pathways:**

Circadian rhythm - mammal

**Product images:**

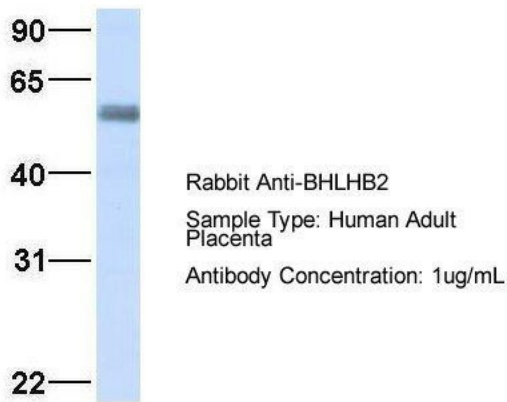
WB Suggested Anti-BHLHB2 Antibody Titration:  
0.2-1 ug/ml; Positive Control: Transfected 293T

## BHLHB2

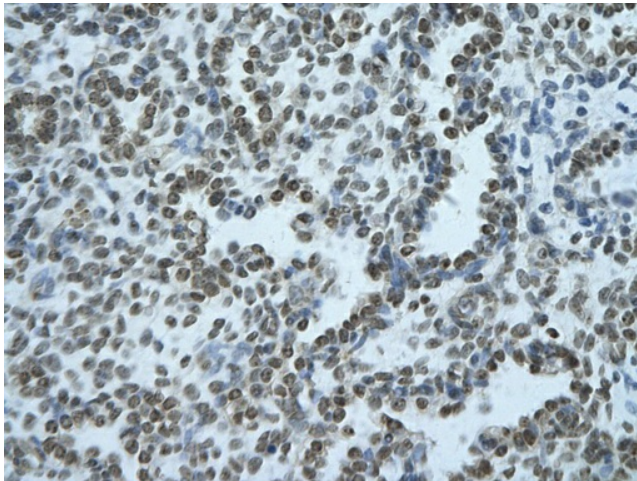


Host: Rabbit; Target Name: BHLHB2; Sample Tissue: Human Fetal Lung; Antibody Dilution: 1.0 ug/ml

## BHLHB2



Host: Rabbit; Target Name: BHLHB2; Sample Tissue: Human Adult Placenta; Antibody Dilution: 1.0 ug/ml



Rabbit Anti-BHLHE40 Antibody; Paraffin Embedded Tissue: Human alveolar cell; Cellular Data: Epithelial cells of renal tubule; Antibody Concentration: 4.0-8.0 ug/ml; Magnification: 400X